

Product datasheet for **HLRT501**

TissueScan, Lung Cancer cDNA Array I

Product data:

Product Type:	TissueScan
Array Category:	Cancer Specific
Clinical Info:	/assets/documents/tissuescan/hlrt501.xls
Diagnosis Category:	Lung Cancer
Tissue:	Lung
Array Name:	Lung Cancer cDNA Array I

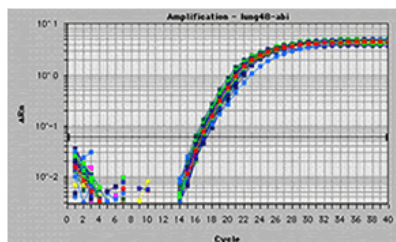
Product images:



TissueScan product image.

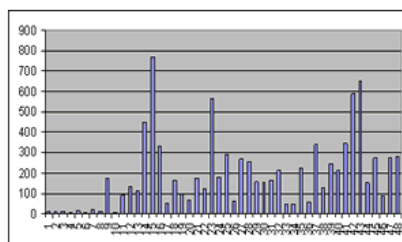


[View online »](#)



A Human Lung Cancer real time PCR Gene Expression panel used in real-time PCR. The beta-actin contents in the 48 human cDNAs were detected using SYBR Green I protocol and performed in PE7700.

Fluorescence reading - cycle number.



A Human Lung Cancer real time PCR Gene Expression panel was used in SYBR Green I based real-time PCR. The expression profile of the human Topoisomerase II alpha (ACCN#: NM_001067) was detected using SYBR Green I protocol and performed in PE7700.

Normalized relative expression among 48 lung samples