

Product datasheet for **HGRT301**

TissueScan, Gastroesophageal Cancer cDNA Array

Product data:

Product Type:	TissueScan
Array Category:	Cancer Specific
Clinical Info:	/assets/documents/tissuescan/hgert301.xls
Diagnosis:	Gastroesophageal Cancer
Tissue:	Stomach, Esophagus
Array Name:	Gastroesophageal Cancer cDNA Array

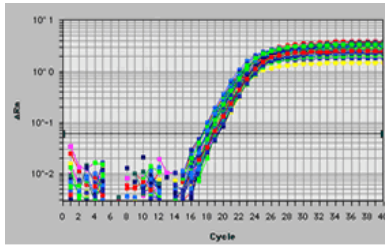
Product images:



TissueScan product image.

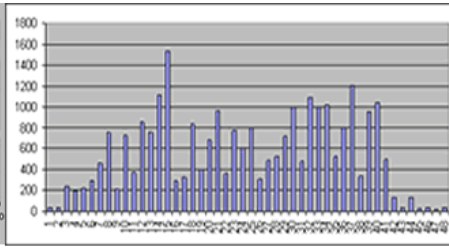


[View online »](#)



A Human Gastroesophageal real time PCR Gene Expression panel was used in real-time PCR. The beta-actin contents in the 48 human cDNAs were detected user SYBR Green I protocol in PE7700.

Fluorescence reading - cycle number



A Human Gastroesophageal real time PCR Gene Expression panel was used in SYBR Green I based real-time PCR. The expression profile of the human survivin (ACC# NM_001168) was detected using SYBR Green I protocol and performed in PE7700.

Normalized relative expression among 48 gastroesophageal samples