

Product datasheet for **GT15098-100**

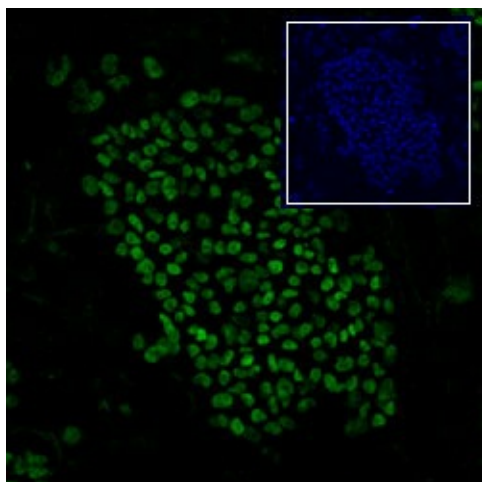
SOX2 Goat Polyclonal Antibody

Product data:

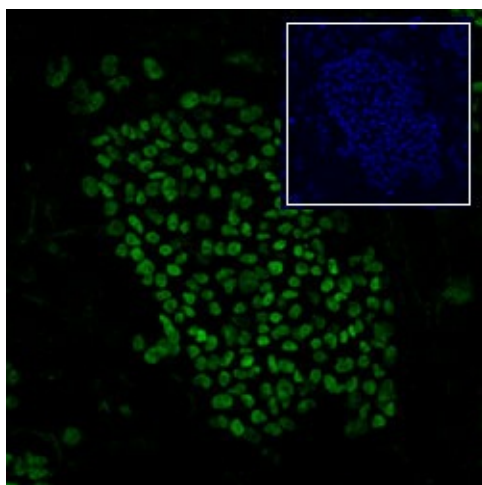
Product Type:	Primary Antibodies
Applications:	ELISA, IF, WB
Recommend Dilution:	Immunohistochemistry: 5-10 µg/mL. Western Blot: 0.1 – 0.2 µg/mL. Tested for Western blotting using recombinant protein. ELISA: 0.5 - 1.0 µg/mL.
Reactivity:	Human
Host:	Goat
Clonality:	Polyclonal
Immunogen:	Recombinant human SOX2
Formulation:	Solution in phosphate-buffered saline with 5% trehalose State: Aff - Purified State: Liquid
Concentration:	1 mg/ml
Gene Name:	Homo sapiens SRY-box 2 (SOX2)
Database Link:	Entrez Gene 6657 Human
Synonyms:	Transcription factor SOX-2, ANOP3, MCOPS3, SRY-box 2
Note:	Protocol: Application Notes Immunocytochemistry - This antibody has been used at a concentration of 5 - 10 µg/mL to detect human SOX2. Cells were fixed with 4% paraformaldehyde in PBS at room temperature for 20 minutes, then blocked with PBS containing 0.1% Triton X-100, 1% BSA and 10% normal donkey serum at room temperature for 45 minutes. After blocking, sections were incubated with diluted primary antibody overnight at 4° C followed by Rhodamine Red coupled anti-goat IgG antibody or another appropriate secondary antibody at room temperature in the dark for one hour. Between each step, cells were washed with PBS containing 0.1% BSA. Western blot - This antibody can be used at 0.1 - 0.2 µg/mL with the appropriate secondary reagents to detect human SOX2. The detection limit for recombinant human SOX2 is approximately 2 ng/lane under non-reducing and reducing conditions.
Protein Families:	Adult stem cells, Cancer stem cells, Embryonic stem cells, ES Cell Differentiation/IPS, Induced pluripotent stem cells, Transcription Factors



[View online »](#)

Product images:

SRY (sex determining region Y)-box 2 (SOX2) detected in immersion fixed BG01V human embryonic stem cells cultured on irradiated mouse embryonic fibroblasts for 3 hours at room temperature (Dilution: 10 ug/mL). Cells were stained using the 493-conjugated Anti-Goat IgG Secondary Antibody (green) and counterstained with DAPI (blue, inset).



SRY (sex determining region Y)-box 2 (SOX2) detected in immersion fixed BG01V human embryonic stem cells cultured on irradiated mouse embryonic fibroblasts for 3 hours at room temperature (Dilution: 10 ug/mL). Cells were stained using the 493-conjugated Anti-Goat IgG Secondary Antibody (green) and counterstained with DAPI (blue, inset).