

Product datasheet for **EDRT102**

TissueScan, Endometrial Cancer cDNA Array II

Product data:

Product Type:	TissueScan
Array Category:	Cancer Specific
Clinical Info:	/assets/documents/tissuescan/edrt102.xls
Diagnosis:	Endometrial Cancer
Tissue:	Endometrium
Array Name:	Endometrial Cancer cDNA Array II

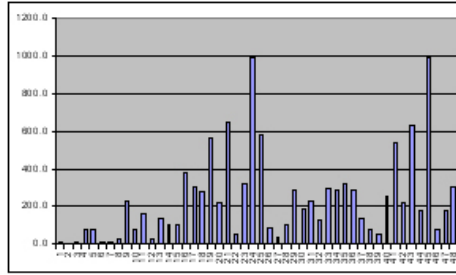
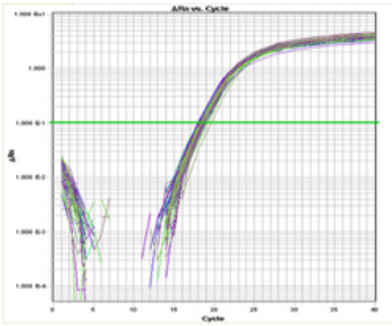
Product images:



TissueScan product image.



[View online »](#)



Left: EDRT102 panel was used for beta-actin amplification showing normalization of the cDNA.
 Right: Expression level of a control gene, survivin, was plotted.
 Both assays were performed using SYBR Green I Protocol in an ABI7900HT instrument.