

## Product datasheet for **EDRT101**

### TissueScan, Endometrial Cancer cDNA Array I

#### Product data:

Product Type:	TissueScan
Array Category:	Cancer Specific
Clinical Info:	/assets/documents/tissuescan/edrt101.xls
Diagnosis:	Endometrial Cancer
Tissue:	Endometrium
Array Name:	Endometrial Cancer cDNA Array I

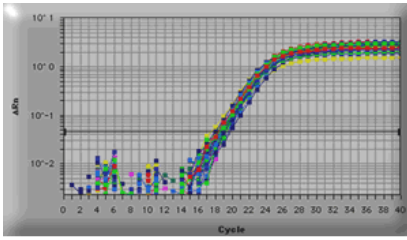
#### Product images:



TissueScan product image.

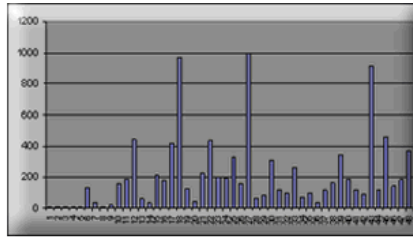


[View online »](#)



A Human Endometrium real time PCR Gene Expression panel used in real-time PCR. The beta-actin contents in the 48 human cDNAs were detected using SYBR Green I protocol and performed in PE7700.

Fluorescence reading - cycle number.



A Human Endometrium real time PCR Gene Expression panel was used in SYBR Green I based real-time PCR. The expression profile of the human Survivin transcript (ACCN#: NM\_001168) was detected using SYBR Green I protocol and performed in PE7700.

Normalized relative expression among 48 Endometrium samples