

## Product datasheet for **EA200075**

### Human PIP5K3 (PIKFYVE) ELISA Kit 1 x 96

#### Product data:

Product Type:	ELISA Kits
Description:	Human PIP5K3 (PIKFYVE) ELISA Kit 1 x 96
Size:	1 x 96 wells
Format:	8x12 divisible strips
Assay Type:	microplate ELISA
Assay Length:	3.5 hours incubations; 0.5 hour washing and analyzing samples
Signal:	Colorimetric
Curve Range:	62.5-4000pg/mL
Sample Type:	Human serum, plasma, cell lysates and other biological fluids.
Sample Volume:	100µl
Specificity:	This kit is used for quantitative detection of PIP5K3
Sensitivity:	22pg/mL
Reactivity:	Human
Cross Reactivity:	There is no detectable cross-reactivity with other relevant proteins.
Interference:	No significant interference observed with available related molecules.
Components:	<ul style="list-style-type: none"><li>• PIP5K3 Antibody Coated 96-well Plate in foil pouch with desiccant   1 plate</li><li>• PIP5K3 Standard Protein   0.1 mL</li><li>• PIP5K3 Detection Antibody   0.12 mL</li><li>• 1x SA-HRP Conjugate   0.12 mL</li><li>• Assay Buffer   40 mL</li><li>• Sample Diluent   30 mL</li><li>• Wash Buffer Concentrate 20X   60 mL</li><li>• TMB Substrate   14 mL</li><li>• Stop Solution   14 mL</li></ul>



[View online »](#)

**Background:**

PIP5K3 also known as PIKFYVE is a FYVE finger-containing phosphoinositide kinase with a significant role in the phosphorylation of phosphatidylinositol 3-phosphate to phosphatidylinositol (3, 5)-bisphosphate. It is predominantly expressed in the cytoplasm of a variety of cell types. Its enzymatic activity is essential for the maintenance of phosphatidylinositol 3, 5-bisphosphate levels influencing membrane trafficking and endosomal function. PIP5K3 functions as an important component in regulating endosomal dynamics. It is part of a complex with VAC14 and FIG4 which plays a significant role in endosomal membrane trafficking lysosome biogenesis and autophagy. The protein's expression aids in maintaining cellular homeostasis and modulating organelle identity within the endosomal-lysosomal system which is critical for normal cellular operations.

**Gene Symbol:**

PIKFYVE

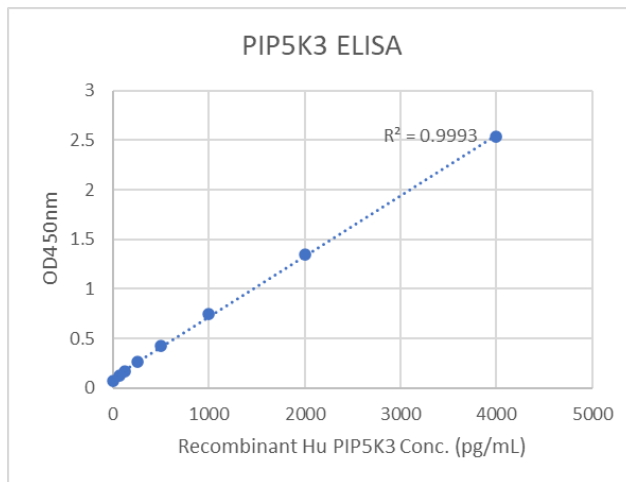
**Gene ID:**

200576

**Standard Curve:**

□

Data image of Human PIP5K3 (PIKFYVE) ELISA Kit

**Product images:**


Data image of Human PIP5K3 (PIKFYVE) ELISA Kit