

Product datasheet for **EA200060**

Human CD36 ELISA Kit 1 x 96

Product data:

Product Type:	ELISA Kits
Description:	Human CD36 ELISA Kit 1 x 96
Size:	1 x 96 wells
Format:	8x12 divisible strips
Assay Type:	Sandwich
Assay Length:	3.5 hours incubations; 0.5 hour washing and analyzing samples
Signal:	Colorimetric
Curve Range:	0.41-100ng/ml
Sample Type:	Human serum, plasma, tissue homogenates and other biological fluids.
Sample Volume:	100µl
Specificity:	This kit is used for quantitative detection of CD36
Sensitivity:	0.263ng/ml
Reactivity:	Human
Cross Reactivity:	There is no detectable cross-reactivity with other relevant proteins.
Interference:	No significant interference observed with available related molecules.
Components:	<ul style="list-style-type: none"> • CD36 Monoclonal Antibody Coated 96-well Plate in foil pouch with desiccant 1 plate • Human CD36 Standard (5000ng/ml) 0.1 mL • 100x Biotin conjugated CD36 Detection Antibody 0.12 mL • 100x SA-HRP Conjugate 0.12 mL • Assay Buffer 30 mL • Standard Diluent 10 mL • Sample Diluent 30 mL • Wash Buffer Concentrate 20X 60 mL • TMB Substrate 12 mL • Stop Solution 12 mL • Plate Sealer 3 pieces



[View online »](#)

Background:

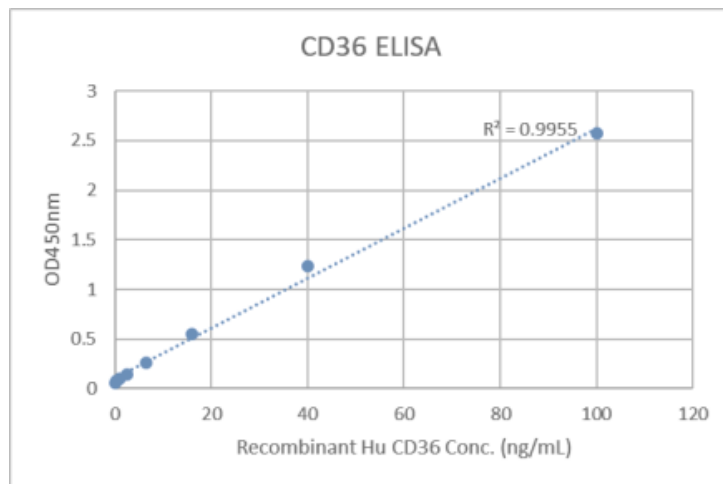
CD36 (cluster of differentiation 36), also known as fatty acid translocase (FAT), platelet glycoprotein 4 (GPIV), scavenger receptor class B member 3 (SR-B3), and glycoproteins 88 (GP88), is an integral membrane protein found on the surface of many cell types in vertebrate animals. CD36 is a multi-ligand pattern recognition receptor that interacts with a large number of structurally dissimilar ligands such as collagen, thrombospondin, oxidized low density lipoprotein, native lipoproteins, oxidized phospholipids, and long-chain fatty acids. Upon ligand binding, CD36 transduces signals that mediate a wide range of pro-inflammatory cellular responses. CD36 may be involved in glucose intolerance, atherosclerosis, arterial hypertension, diabetes, cardiomyopathy, Alzheimer's disease and various cancers.

Gene Symbol:

CD36

Gene ID:

948

Product images:


Data image of Human CD36 ELISA Kit.