

Product datasheet for **EA200047**

Human Aminoacylase 1 (ACY1) ELISA Kit 1 x 96

Product data:

Product Type:	ELISA Kits
Description:	Human Aminoacylase 1 (ACY1) ELISA Kit 1 x 96
Size:	1 x 96 wells
Format:	8x12 divisible strips
Assay Type:	Sandwich
Assay Length:	3.5 hours incubations; 0.5 hour washing and analyzing samples
Signal:	Colorimetric
Curve Range:	0.625-40ng/ml
Sample Type:	Human serum, plasma and other biological fluids.
Sample Volume:	100µl
Specificity:	This kit is used for quantitative detection of ACY1
Sensitivity:	144pg/ml
Reactivity:	Human
Cross Reactivity:	There is no detectable cross-reactivity with other relevant proteins.
Interference:	No significant interference observed with available related molecules.
Components:	<ul style="list-style-type: none">● ACY1 Monoclonal Antibody Coated 96-well Plate in foil pouch with desiccant 1 plate● Human ACY1 Standard (2000ng/ml) 0.1 mL● 100x Biotin conjugated ACY1 Detection Antibody 0.12 mL● 100x SA-HRP Conjugate 0.12 mL● Assay Buffer 40 mL● Sample Diluent 30 mL● Wash Buffer Concentrate 20X 60 mL● TMB Substrate 12 mL● Stop Solution 12 mL● Plate Sealer 3 pieces



[View online »](#)

Background:

Aminoacylase-1 (ACY1) is an enzyme that in humans is encoded by the ACY1 gene. ACY1 is a cytosolic, homodimeric, zinc-binding enzyme that catalyzes the hydrolysis of acylated L-amino acids to L-amino acids and acyl group, and has been postulated to function in the catabolism and salvage of acylated amino acids. ACY1 is expressed mostly in the kidney, followed by the liver, brain, skeletal muscle, pancreas, and other organs at lower levels. It has been reported to participate in various human diseases. Studies have shown that ACY1 plays a crucial role in the pathogenesis of numerous tumor diseases, such as colorectal, liver, and small cell lung cancers and renal cell carcinoma. ACY1 regulates the proliferation, migration, and invasion of human neuroblastoma cells through the ERK1/2 and TGF- β 1 signaling pathways. In liver cirrhosis, ACY1 is associated with protein metabolism, participates in protein degradation, and serves as a valuable candidate biomarker for diagnosing the disease. ACY1 is involved in the disease development and prognosis of colorectal cancer, and is related to lymph node metastasis, vascular invasion, and shorter disease-free survival.

Gene Symbol:

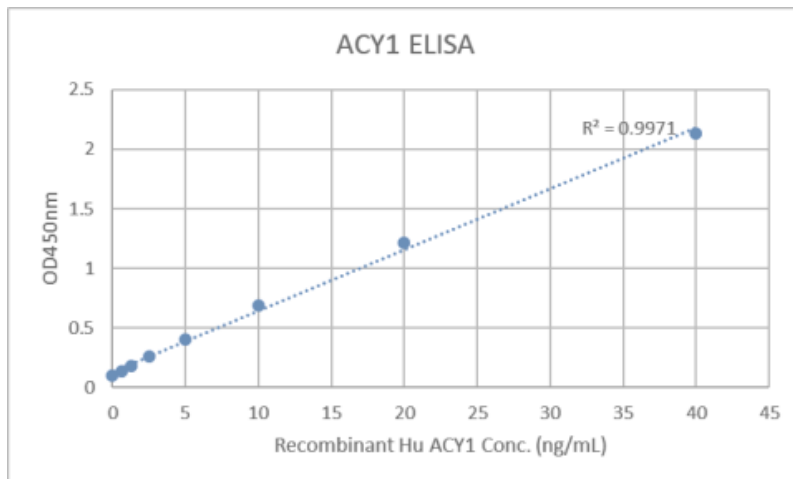
ACY1

Gene ID:

95

Standard Curve:

□
Human Aminoacylase 1 (ACY1) ELISA Kit.

Product images:

Human Aminoacylase 1 (ACY1) ELISA Kit.