

Product datasheet for **EA200039**

Human AKT1 ELISA Kit 1 x 96

Product data:

Product Type:	ELISA Kits
Description:	Human AKT1 ELISA Kit 1 x 96
Size:	1 x 96 wells
Format:	8x12 divisible strips
Assay Type:	Sandwich
Assay Length:	3.5 hours incubations; 0.5 hour washing and analyzing samples
Signal:	Colorimetric
Curve Range:	78-5000pg/ml
Sample Type:	Human serum, plasma, and other biological fluids.
Sample Volume:	100µl
Specificity:	This kit is used for quantitative detection of AKT1
Sensitivity:	21pg/ml
Reactivity:	Human
Cross Reactivity:	There is no detectable cross-reactivity with other relevant proteins.
Interference:	No significant interference observed with available related molecules.
Components:	<ul style="list-style-type: none">• AKT1 Monoclonal Antibody Coated 96-well Plate in foil pouch with desiccant 1 plate• Human AKT1 Standard (250ng/ml) 0.1 mL• 100x Biotin conjugated AKT1 Detection Antibody 0.12 mL• 100x SA-HRP Conjugate 0.12 mL• Assay Buffer 40 mL• Sample Diluent 20 mL• Wash Buffer Concentrate 20X 60 mL• TMB Substrate 12 mL• Stop Solution 12 mL• Plate Sealer 3 pieces



[View online »](#)

Background:

AKT1 also known as RAC (Rho family)-alpha serine/threonine-protein kinase, is an enzyme that in humans is encoded by the AKT1 gene. AKT1 is one of 3 closely related serine/threonine-protein kinases (AKT1, AKT2 and AKT3) that belong to the AKT subfamily. AKT represents an important signaling hub, modulating many processes including metabolism, proliferation, cell survival, growth and angiogenesis by phosphorylating a range of downstream substrates in response to growth factor stimulation. In human cancers, AKT1 plays a central role in tumorigenesis. Recent studies using clinical specimens have shown that Akt protein is frequently activated in HER2/neu-overexpressing breast tumors. The overexpression of pAkt may be a powerful prognostic marker for predicting disease-free survival (DFS) and overall survival of breast cancer patients.

Gene Symbol:

AKT1

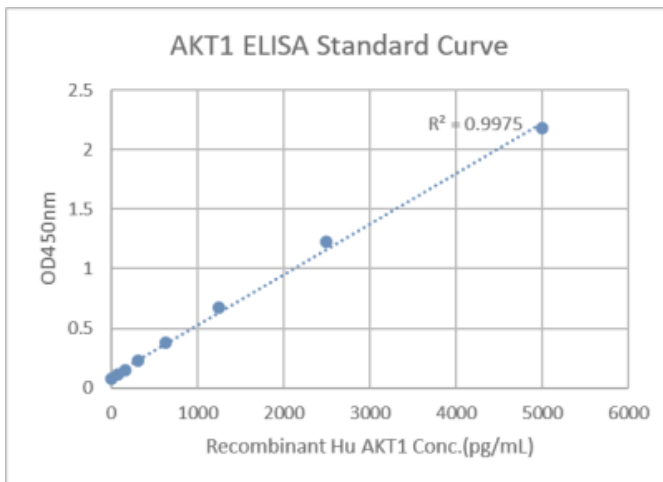
Gene ID:

207

Standard Curve:

□

Data image of Human AKT1 ELISA Kit.

Product images:


Data image of Human AKT1 ELISA Kit.