

Product datasheet for **EA200024**

Human Cytokeratin 19 (KRT19) ELISA Kit 1 x 96

Product data:

Product Type:	ELISA Kits
Description:	Human Cytokeratin 19 (KRT19) ELISA Kit 1 x 96
Size:	1 x 96 wells
Format:	8x12 divisible strips
Assay Type:	Sandwich
Assay Length:	4 hours incubations; 30min washing and analyzing samples
Signal:	Colorimetric
Curve Range:	15.6pg/ml-1000pg/ml
Sample Type:	Human serum, plasma and other biological fluids
Sample Volume:	100µl
Specificity:	This kit is used for quantitative detection of Human KRT19
Sensitivity:	8pg/ml
Reactivity:	Human
Cross Reactivity:	There is no detectable cross-reactivity with other relevant proteins.
Interference:	No significant interference observed with available related molecules.
Components:	<ul style="list-style-type: none">● KRT19 Antibody Coated 96-well Plate in foil pouch with desiccant 1 plate● Recombinant HumanKRT19 Standard (50ng/ml) 0.1 mL● 100x Biotinylated Human KRT19 Detection Antibody 0.12 mL● 100x Peroxidase Conjugate 0.12 mL● Assay Buffer 60 mL● Wash Buffer Concentrate 20X 60 mL● TMB Substrate 12 mL● Stop Solution 12 mL



[View online »](#)

Background:

Keratin-19 (KRT19) also known as keratin, type I cytoskeletal 19, cytokeratin-19 (CK-19), or CYFRA 21-1, is a 40 kDa protein that in humans is encoded by the KRT19 gene. Keratin 19 is a member of the keratin family. The keratins are intermediate filament proteins responsible for the structural integrity of epithelial cells and are subdivided into cytokeratins and hair keratins. Keratin 19 is a type I keratin. The type I cytokeratins consist of acidic proteins which are arranged in pairs of heterotypic keratin chains. KRT19 is the most used marker for the RT-PCR-mediated detection of tumor cells disseminated in lymph nodes, peripheral blood, and bone marrow of breast cancer patients. There is a positive correlation between higher expression of KRT19 in some kind of cancers and worse patient survival, where it serves as a diagnostic or prognostic biomarker.

Gene Symbol:

KRT19

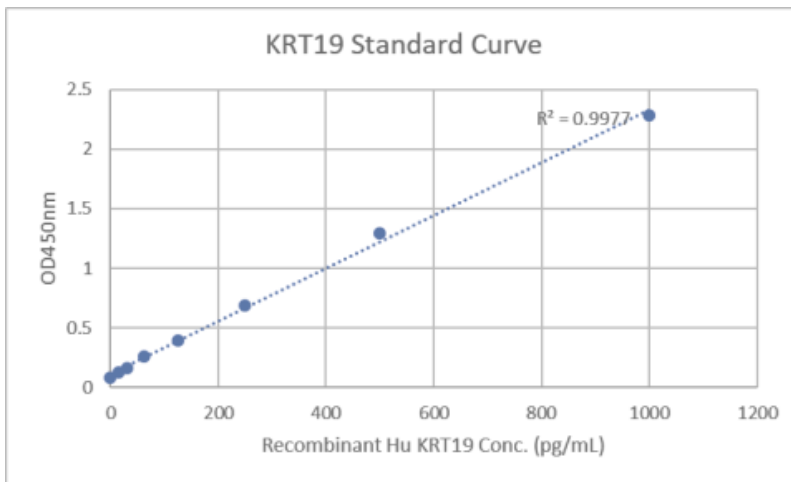
Gene ID:

3880

Standard Curve:

□

Data image of Cytokeratin 19 (KRT19) ELISA Kit.

Product images:

Data image of Cytokeratin 19 (KRT19) ELISA Kit.