

## Mouse TPOR/MPL ELISA Kit

**Catalog Number:**EA102312

### Assay Principle

The OriGene Mouse Mpl Pre-Coated ELISA (Enzyme-Linked Immunosorbent Assay) kit is a solid phase immunoassay specially designed to measure Mouse Mpl with a 96-well strip plate that is pre-coated with antibody specific for Mpl. The detection antibody is a biotinylated antibody specific for Mpl. The kit contains recombinant Mouse Mpl with immunogen: Expression system for standard: NSO; Immunogen sequence: Q26-W482. The kit is analytically validated with ready to use reagents.

To measure Mouse Mpl, add standards and samples to the wells, then add the biotinylated detection antibody. Wash the wells with PBS or TBS buffer, and add Avidin-Biotin-Peroxidase Complex (ABC-HRP). Wash away the unbounded ABC-HRP with PBS or TBS buffer and add TMB. TMB is substrate to HRP and will be catalyzed to produce a blue color product, which changes into yellow after adding acidic stop solution. The density of the yellow product is linearly proportional to Mouse Mpl in the sample. Read the density of the yellow product in each well using a plate reader, and benchmark the sample wells' readings against the standard curve to determine the concentration of Mouse Mpl in the sample. For more information on assay principle, protocols, and troubleshooting tips, see OriGene's ELISA Resource Center at <https://www.OriGenebio.com/elisa-technical-resource-center>.

### Overview

<b>Product Name</b>	Mouse TPOR/MPL ELISA Kit
<b>Reactive Species</b>	Mouse
<b>Size</b>	96wells/kit, with removable strips.
<b>Description</b>	Sandwich High Sensitivity ELISA kit for Quantitative Detection of Mouse TPOR/MPL. 96wells/kit, with removable strips.
<b>Sensitivity</b>	<15pg/ml *The sensitivity or the minimum detectable dose (MDD) is the lower limit of target protein that can be detected by the kit. It is determined by adding two standard deviations to the mean O.D. value of twenty (20) blank wells and calculating the corresponding concentration.
<b>Detection Range</b>	156pg/ml-10000pg/ml
<b>Storage Instructions</b>	Store at 4°C for 6 months, at -20°C for 12 months. Avoid multiple freeze-thaw cycles (Shipped with wet ice.)
<b>Uniprot ID</b>	Q08351



***OriGene Technologies Inc.***

9620 Medical Center Drive, Suite 200, Rockville, MD 20850

Phone: 1.888.267.4436

Fax: 301-340-9254

Email: [techsupport@origene.com](mailto:techsupport@origene.com)

Web: [www.origene.com](http://www.origene.com)

---

## ***Technical Details***

<b>Capture/Detection Antibodies</b>	
<b>Specificity</b>	Natural and recombinant Mouse Mpl
<b>Immunogen</b>	Expression system for standard: NSO; Immunogen sequence: Q26-W482
<b>Cross Reactivity</b>	There is no detectable cross-reactivity with other relevant proteins.

## Notice Before Application

Please read the following instructions before starting the experiment.

1. To inspect the validity of experiment operation and the appropriateness of sample dilution proportion, pilot experiment using standards and a small number of samples is recommended.
2. Before using the Kit, spin tubes and bring down all components to the bottom of tubes.
3. Don't let 96-well plate dry, for dry plate will inactivate active components on plate.
4. Don't reuse tips and tubes to avoid cross contamination.
5. Avoid using the reagents from different batches together.

## Kit Components/Materials Provided

Description	Quantity	Volume
Anti-Mouse Mpl Pre-coated 96-well strip microplate	1	12 strips of 8 wells
Mouse Mpl Standard	2	10ng/tube
Mouse Mpl Biotinylated antibody (100x)	1	130 µl
Avidin-Biotin-Peroxidase Complex (100x)	1	130 µl
Sample Diluent	1	30ml
Antibody Diluent	1	12ml
Avidin-Biotin-Peroxidase Diluent	1	12ml
Color Developing Reagent (TMB)	1	10ml
Stop Solution	1	10ml
Plate Sealers	4	Piece

\*Why there is no wash buffer? Our Avidin-Biotin-Peroxidase Diluent contains the detergent (TWEEN) normally present in other companies' ELISA kits. This saves you the step of having to wash with the special wash buffer and achieves similar or better signal to noise ratio. The wash can use regular wash buffers (PBS, TBS etc.) commonly found in labs.



***OriGene Technologies Inc.***

9620 Medical Center Drive, Suite 200, Rockville, MD 20850

Phone: 1.888.267.4436

Fax: 301-340-9254

Email: [techsupport@origene.com](mailto:techsupport@origene.com)

Web: [www.origene.com](http://www.origene.com)

---

***Required Materials That Are Not Supplied***

Microplate Reader capable of reading absorbance at 450nm.

Automated plate washer (optional)

1000ml of 1X wash buffer (TBS or PBS)

Pipettes and pipette tips capable of precisely dispensing 0.5 µl through 1 ml volumes of aqueous solutions.

Multichannel pipettes are recommended for large amount of samples.

Deionized or distilled water.

500ml graduated cylinders.

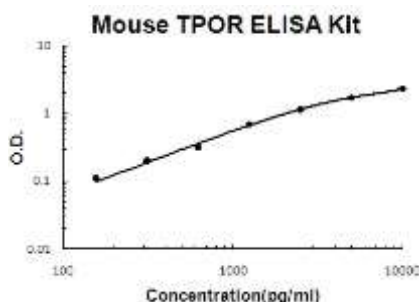
Test tubes for dilution.

## Mouse TPOR/MPL ELISA Kit (EA102312) Standard Curve Example

Highest O.D. value might be higher or lower than in the example. The experiment result is statistically significant if the highest O.D. value is no less than 1.0.

Concentration 0 (pg/ml)	156	312	625	125000	25000	5000	10000	
O.D.	0.040	0.109	0.198	0.311	0.685	1.131	1.690	2.289

### Mouse TPOR/MPL ELISA Kit standard curve



A standard curve is provided for demonstration only. A standard curve should be generated for each set of samples assayed.

## Intra/Inter Assay Variability

OriGene spend great efforts in documenting lot to lot variability and make sure our assay kits produce robust data that are reproducible.

**Intra-Assay Precision (Precision within an assay):** Three samples of known concentration were tested on one plate to assess intra-assay precision.

**Inter-Assay Precision (Precision across assays):** Three samples of known concentration were tested in separate assays to assess inter-assay precision.

Intra-Assay Precision

Inter-Assay Precision

Sample	1	2	3	1	2	3
n	16	16	16	24	24	24
Mean(pg/ml)	310	1660	3993	319	1771	4235
Standard deviation	15.6%9	131.14	171.69	18.82	143.45	237.16
CV(%)	4.9%	7.9%	4.3%	5.9%	8.1%	5.6%

## Reproducibility

To assay reproducibility, three samples with differing target protein concentrations were assayed using four different lots.

Lots	Lot1 (pg/ml)	Lot2 (pg/ml)	Lot3 (pg/ml)	Lot4 (pg/ml)	Mean (pg/ml)	Standard Deviation	CV (%)
Sample 1	310	290	290	302	298	8.48	2.8%
Sample 2	1660	1604	1470	1495	1557	77.83	4.9%
Sample 3	3993	4149	4386	4522	4262	205	4.8%

\*number of samples for each test n=16.

## Preparation Before The Experiment

Item	Preparation
All reagents	Bring all reagents to 37°C prior to use. The assay can also be done at room temperature however we recommend doing it at 37°C for best consistency with our QC results. Also the TMB incubation time estimate (15-25min) is based on 37°C.
Wash buffer	Prepare 1000ml of 1X PBS or TBS for wash buffer.
Biotinylated Anti-Mouse Mpl antibody	It is recommended to prepare this reagent immediately prior to use by diluting the Mouse Mpl Biotinylated antibody (100x) 1:100 with Antibody Diluent. Prepare 100 µl by adding 1 µl of Biotinylated antibody (100x) to 99 µl of Antibody Diluent for each well. Mix gently and thoroughly and use within 2 hours of generation.
Avidin-Biotin-Peroxidase Complex	It is recommended to prepare this reagent immediately prior to use by diluting the Avidin-Biotin-Peroxidase Complex (100x) 1:100 with Avidin-Biotin-Peroxidase Diluent. Prepare 100 µl by adding 1 µl of Avidin-Biotin-Peroxidase Complex (100x) to 99 µl of Avidin-Biotin-Peroxidase Diluent for each well. Mix gently and thoroughly and use within 2 hours of generation.
Mouse Mpl Standard	It is recommended that the standards be prepared no more than 2 hours prior to performing the experiment. Use one 10ng of lyophilized Mouse Mpl standard for each experiment. Gently spin the vial prior to use. Reconstitute the standard to a stock concentration of 10ng/ml using 1ml of sample diluent. Allow the standard to sit for a minimum of 10 minutes with gentle agitation prior to making dilutions.

Microplate

The included microplate is coated with capture antibodies and ready-to-use. It does not require additional

## Dilution of Mouse Mpl Standard

1. Number tubes 1-8. Final Concentrations to be Tube # 1 – 10000pg/ml, #2 – 5000pg/ml, #3 – 2500pg/ml, #4 – 1250pg/ml, #5 – 625pg/ml, #6 – 312.5pg/ml, #7 – 156.25pg/ml, #8 – 0.0 (Blank).
2. For standard #1, add 1000µl of undiluted standard stock solution to tube #1.
3. Add 300 µl of sample diluent to tubes # 2-7.
4. To generate standard #2, add 300 µl of standard #1 from tube #1 to tube #2 for a final volume of 600 µl. Mix thoroughly.
5. To generate standard #3, add 300 µl of standard #2 from tube #2 to tube #3 for a final volume of 600 µl. Mix thoroughly.
6. Continue the serial dilution for tube #4-7.
7. Tube #8 is a blank standard to be used with every experiment.

## Sample Preparation and Storage

These sample collection instructions and storage conditions are intended as a general guideline and the sample stability has not been evaluated.

Sample Type	Procedure
Cell culture supernatants	Clear sample of particulates by centrifugation, assay immediately or store samples at -20°C.
Serum	Use a serum separator tube (SST) and allow serum to clot at room temperature for about four hours. Then, centrifuge for 15 min at approximately 1,000 x g. assay immediately or store samples at -20°C.
Plasma	Collect plasma using heparin or EDTA as an anticoagulant. Centrifuge for 15 min at approximately 1,000 x g. Assay immediately or store samples at -20°C. *Note: it is important to not use anticoagulants other than the ones described above to treat plasma for other anticoagulants could block the antibody binding site.
Cell lysates	Lyse the cells, make sure there are no visible cell sediments. Centrifuge cell lysates at approximately 10000 X g for 5 min. Collect the supernatant.

## Sample Dilution

The target protein concentration should be estimated and appropriate sample dilutions should be selected such that the final protein concentration lies near the middle of the linear dynamic range of the assay.

It is recommended to prepare 150 µl of sample for each replicate to be assayed. The samples should be diluted with sample diluent and mixed gently.

## Assay protocol

*It is recommended that all reagents and materials be equilibrated to 37°C/room temperature prior to the experiment (see Preparation Before The Experiment if you have missed this information).*

1. Prepare all reagents and working standards as directed previously.
2. Remove excess microplate strips from the plate frame and seal and store them in the original packaging.
3. Add 100 µl of the standard, samples, or control per well. Add 100 µl of the sample diluent buffer into the control well (Zero well). At least two replicates of each standard, sample, or control is recommended.
4. Cover with the plate sealer provided and incubate for 120 minutes at RT (or 90 min. at 37 °C).
5. Remove the cover and discard the liquid in the wells into an appropriate waste receptacle. Invert the plate on the benchtop onto a paper towel and tap the plate to gently blot any remaining liquid. It is recommended that the wells are not allowed to completely dry at any time.
6. Add 100 µl of the prepared 1x Biotinylated Anti-Mouse Mpl antibody to each well.
7. Cover with plate sealer and incubate for 90 minutes at RT (or 60 minutes at 37°C).
8. Wash the plate 3 times with the 1x wash buffer.
  - a. Discard the liquid in the wells into an appropriate waste receptacle. Then, invert the plate on the benchtop onto a paper towel and tap the plate to gently blot any remaining liquid. It is recommended that the wells are not allowed to completely dry at any time.
  - b. Add 300 µl of the 1x wash buffer to each assay well. (For cleaner background incubate for 60 seconds between each wash).
  - c. Repeat steps a-b 2 additional times.
9. Add 100 µl of the prepared 1x Avidin-Biotin-Peroxidase Complex into each well. Cover with the plate sealer provided and incubate for 40 minutes at RT (or 30 minutes at 37°C).
10. Wash the plate 5 times with the 1x wash buffer.
  - a. Discard the liquid in the wells into an appropriate waste receptacle. Then, invert the plate on the benchtop onto a paper towel and tap the plate to gently blot any remaining liquid. It is recommended that the wells are not allowed to completely dry at any time.
  - b. Add 300 µl of the 1x wash buffer to each assay well. (For cleaner background incubate for 60 seconds between each wash).
  - c. Repeat steps a-b 4 additional times.
11. Add 90 µl of Color Developing Reagent to each well. Cover with the plate sealer provided and incubate in the dark for 30 minutes at RT (or 15-25 minutes at 37°C). (The optimal incubation time must be empirically determined. A guideline to look for is blue shading the top four standard wells, while the remaining standards remain clear.)
12. Add 100 µl of Stop Solution to each well. The color should immediately change to yellow.
13. Within 30 minutes of stopping the reaction, the O.D. absorbance should be read with a microplate reader at 450nm.

## Data Analysis

*Average the duplicate readings for each standard, sample, and control. Subtract the average zero standard O.D. reading.*

*It is recommended that a standard curve be created using computer software to generate a four parameter logistic (4-PL) curve-fit. A free program capable of generating a four parameter logistic (4-PL) curve-fit can be found online at: [www.myassays.com/four-parameter-logistic-curve.assay](http://www.myassays.com/four-parameter-logistic-curve.assay).*

*Alternatively, plot the mean absorbance for each standard against the concentration. The measured concentration in the sample can be interpolated by using linear regression of each average relative OD against the standard curve generated using curve fitting software. This will generate an adequate but less precise fit of the data.*



*For diluted samples, the concentration reading from the standard curve must be multiplied by the dilution factor.*

## **Background on Mpl**

*The thrombopoietin receptor (TPOR), also known as CD110, is a protein that in humans is encoded by the MPL (myeloproliferative leukemia virus) oncogene. The human MPL gene is mapped to chromosome 1p34. The protein encoded by the c-mpl gene, CD110, is a 635 amino acid transmembrane domain, with two extracellular cytokine receptor domains and two intracellular cytokine receptor box motifs. TPO-R deficient mice were severely thrombocytopenic, emphasizing the important role of CD110 and thrombopoietin in megakaryocyte and platelet formation. Upon binding of thrombopoietin CD110 is dimerized and the JAK family of non-receptor tyrosine kinases, as well as the STAT family, the MAPK family, the adaptor protein Shc and the receptors themselves become tyrosine phosphorylated.*