

Product datasheet for **DRM018**

Synaptophysin (SYP) Rabbit Monoclonal Antibody [Clone ID: SP11]

Product data:

| | |
|-----------------------|--|
| Product Type: | Primary Antibodies |
| Clone Name: | SP11 |
| Applications: | IHC |
| Recommended Dilution: | Immunohistochemistry on formalin-fixed paraffin embedded sections: Use at 1/100 in an ABC method (30 minutes at room temperature). Formalin fixed paraffin embedded tissue sections require high temperature antigen unmasking with 10 mM citrate buffer, pH 6.0 prior to immunostaining. Recommended Positive Control: Pancreas. |
| Reactivity: | Human |
| Host: | Rabbit |
| Isotype: | IgG |
| Clonality: | Monoclonal |
| Immunogen: | A synthetic peptide of human Synaptophysin |
| Specificity: | This antibody recognizes a protein of 38 kDa, identified as synaptophysin. It labels normal neuroendocrine cells of adrenal medulla, carotid body, skin, pituitary gland, thyroid, lung, pancreas, gastrointestinal mucosa, Paneths cells in the gastrointestinal tract and of gastric parietal cells. Neurons in the brain, spinal cord, and retina are also labeled. In combination with anti-chromogranin A and anti-NSE, Ab to synaptophysin is very useful in the identification of normal neuroendocrine cells and neuroendocrine neoplasms. Cellular Localization: Cytoplasmic. |
| Formulation: | State: Supernatant State: Liquid tissue culture supernatant containing sodium azide as preservative |
| Conjugation: | Unconjugated |
| Storage: | Store undiluted at 2-8°C. DO NOT FREEZE! |
| Stability: | Shelf life: one year from despatch. |
| Gene Name: | synaptophysin |
| Database Link: | Entrez Gene 6855 Human P08247 |

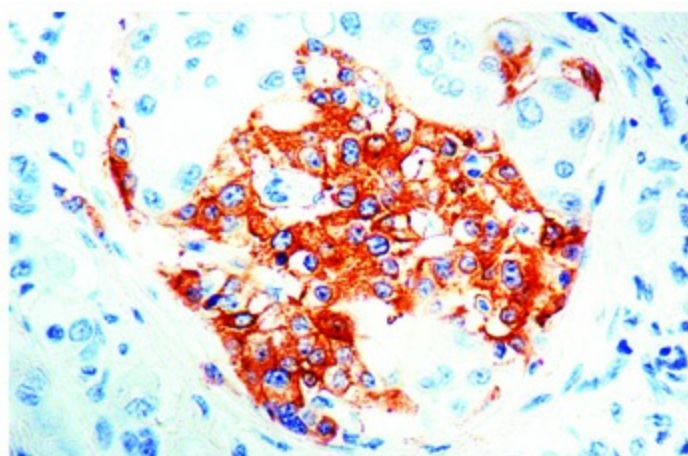


[View online »](#)

Synonyms: Neuroendocrine Marker

Protein Families: Secreted Protein, Transmembrane

Product images:



Formalin fixed paraffin embedded human pancreas stained with Synaptophysin antibody (Cat.-No DRM018).