

Product datasheet for **DRM010**

Calretinin (CALB2) Rabbit Monoclonal Antibody [Clone ID: SP13]

Product data:

Product Type:	Primary Antibodies
Clone Name:	SP13
Applications:	IHC
Recommended Dilution:	Immunohistochemistry on Paraffin Sections: 1/100 in an ABC method (30 minutes at room temperature). Formalin fixed paraffin embedded tissue sections require high temperature antigen unmasking with 10 mM citrate buffer, pH 6.0 prior to immunostaining. Use mesothelioma as Positive Control.
Reactivity:	Human, Mouse, Rat
Host:	Rabbit
Isotype:	IgG
Clonality:	Monoclonal
Immunogen:	Recombinant full-length Mouse Calretinin protein.
Specificity:	This antibody recognizes a 31.5 kD protein named Calretinin. Cellular Localization: Cytoplasmic.
Formulation:	State: Supernatant State: Liquid Tissue Culture Supernatant with 0.05% Sodium Azide as preservative.
Conjugation:	Unconjugated
Storage:	Store the antibody undiluted at 2-8°C.
Stability:	Shelf life: one year from despatch.
Gene Name:	calbindin 2
Database Link:	Entrez Gene 794 Human P22676

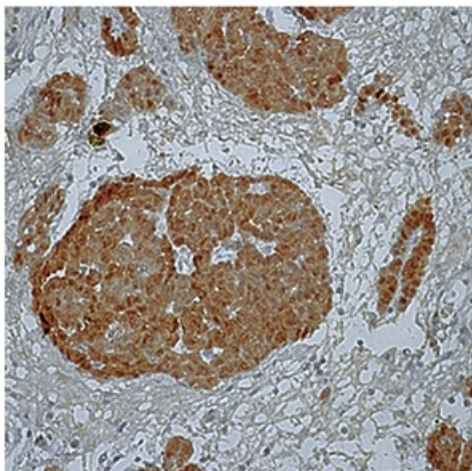
[View online »](#)

Background:

Calretinin is an intracellular calcium-binding protein belonging to the troponin C superfamily characterized by a structural motif described as the EF-hand domain. The immunohistochemical detection of calretinin in developing cerebellum is restricted to the later stages indicated by weak staining from week 21 of gestation, in Purkinje and basket cells and in neurons of the dentate nucleus. The intensity of staining increases as the cerebellum matures. In tumors, calretinin has been detected in mesotheliomas and some pulmonary adenocarcinomas.

Synonyms:

CALB2, CAB29, 29 kDa calbindin

Product images:


Formalin fixed paraffin embedded human mesothelioma stained with Calretinin antibody (Cat. # DRM010).