

## Product datasheet for **DRM003**

### Cyclin D1 (CCND1) Rabbit Monoclonal Antibody [Clone ID: SP4]

#### Product data:

Product Type:	Primary Antibodies
Clone Name:	SP4
Applications:	IHC, IP, WB
Recommended Dilution:	Immunoprecipitation. Western Blot: 1:100 - 1:500. Immunohistochemistry on formalin-fixed paraffin embedded sections: dilute 1:100 in an ABC method (30 minutes at room temperature). Formalin fixed paraffin embedded tissue sections require high temperature antigen unmasking with 10 mM citrate buffer, pH 6.0 prior to immunostaining. Recommended Positive Control: Breast carcinoma
Reactivity:	Human, Mouse, Rat
Host:	Rabbit
Isotype:	IgG
Clonality:	Monoclonal
Immunogen:	A synthetic peptide from C-terminus of human cyclin D1
Specificity:	Reacts to Cyclin D1. Cellular Localization: Nuclear
Formulation:	State: Supernatant State: Liquid tissue culture supernatant containing sodium azide
Conjugation:	Unconjugated
Storage:	Store the antibody undiluted at 2-8°C for one month or (in aliquots) at -20°C for longer. Avoid repeated freezing and thawing.
Stability:	Shelf life: one year from despatch.
Gene Name:	cyclin D1
Database Link:	<a href="#">Entrez Gene 595 Human P24385</a>

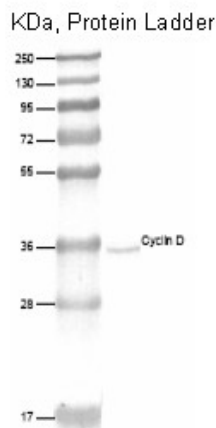


[View online »](#)

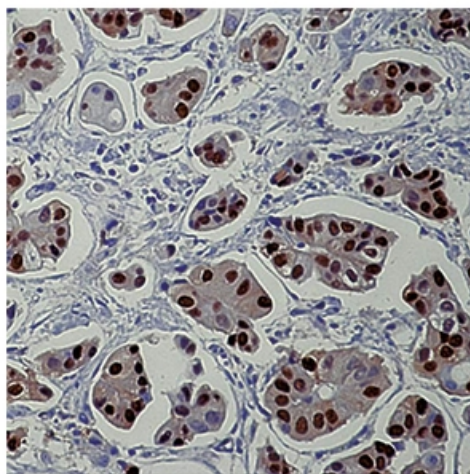
**Background:** Cyclin D1 or PRAD-1 or bcl-1 is one of the key cell cycle regulators, and functions in association with cdk4 and / or cdk6 by phosphorylating the Rb protein. It is a putative proto-oncogene overexpressed in a wide variety of human neoplasms including mantle cell lymphomas (MCL).

**Synonyms:** Cyclin-D1, PRAD-1 oncogene, BCL-1 oncogene, CCND1, BCL1, PRAD1

**Product images:**



Western blot analysis of human lung cell extract with Cyclin D1 antibody (DRM003)



Formalin fixed paraffin embedded human breast carcinoma stained with Cyclin D1 antibody (Cat.#DRM003).