

Product datasheet for **DRM001**

Estrogen Receptor 1 (ESR1) Rabbit Monoclonal Antibody [Clone ID: SP1]

Product data:

Product Type:	Primary Antibodies
Clone Name:	SP1
Applications:	IHC, WB
Recommended Dilution:	Immunohistochemistry on formalin-fixed paraffin embedded sections: dilute 1:100 in an ABC method (30 minutes at room temperature). Formalin fixed paraffin embedded tissue sections require high temperature antigen unmasking with 10 mM citrate buffer, pH 6.0 prior to immunostaining. Recommended Positive Control: Breast Carcinoma
Reactivity:	Hamster, Human, Mouse, Rat
Host:	Rabbit
Isotype:	IgG
Clonality:	Monoclonal
Immunogen:	Synthetic peptide derived from C-terminal of human estrogen receptor
Specificity:	This antibody recognizes a protein of 67kDa, which is identified as estrogen receptor (ER). Cellular Localization: Nuclear.
Formulation:	State: Supernatant State: Liquid tissue culture supernatant containing sodium azide as preservative
Conjugation:	Unconjugated
Storage:	Store the antibody undiluted at 2-8°C for one month or (in aliquots) at -20°C for longer. Avoid repeated freezing and thawing.
Stability:	Shelf life: one year from despatch.
Gene Name:	estrogen receptor 1
Database Link:	Entrez Gene 2099 Human P03372



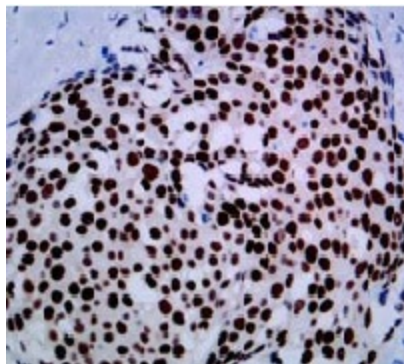
[View online »](#)

Background:

ER content of breast cancer tissue is an important parameter in the prediction of prognosis and response to endocrine therapy. This antibody strongly stains the nucleus of epithelial cells in breast carcinomas. The ER is an important regulator of growth and differentiation in the mammary gland. Presence of ER in breast tumors indicates an increased likelihood of response to anti-estrogen (e.g. tamoxifen) therapy.

Synonyms:

ER alpha, Estradiol receptor, ESR1, ESR, NR3A1

Product images:

DRM001