

## Product datasheet for **DP3525S**

### Lif Rabbit Polyclonal Antibody

#### Product data:

Product Type:	Primary Antibodies
Applications:	WB
Recommended Dilution:	<b>Western Blot:</b> 1-5 µg/ml.
Reactivity:	Human
Host:	Rabbit
Clonality:	Polyclonal
Immunogen:	Highly pure recombinant Mouse Leukemia Inhibitory Factor (LIF) (Ser24–Phe203) produced in <i>E. Coli</i> .
Specificity:	This antibody recognizes Mouse LIF. Other species not tested.
Formulation:	PBS State: Purified State: Lyophilized purified IgG fraction
Reconstitution Method:	Centrifuge vial prior to opening. Restore in sterile water to a concentration of 0.1-1.0 mg/ml.
Purification:	Affinity Chromatography on Protein A
Conjugation:	Unconjugated
Storage:	Store lyophilized at 2-8°C for 6 months or at -20°C long term. After reconstitution store the antibody undiluted at 2-8°C for one month or (in aliquots) at -20°C long term. Avoid repeated freezing and thawing.
Stability:	Shelf life: one year from despatch.
Gene Name:	leukemia inhibitory factor
Database Link:	<a href="#">Entrez Gene 3976 Human P09056</a>



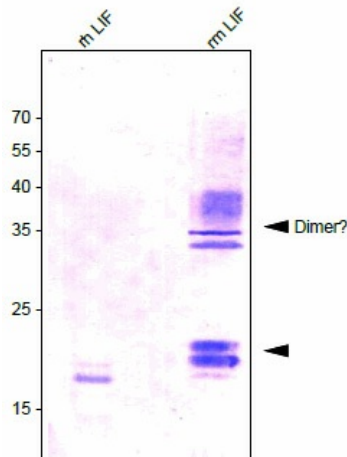
[View online »](#)

**Background:**

Leukemia Inhibitory Factor also called LIF is a lymphoid factor that promotes long-term maintenance of embryonic stem cells by suppressing spontaneous differentiation. Leukemia Inhibitory Factor has several functions such as cholinergic neuron differentiation, control of stem cell pluripotency, bone & fat metabolism, mitogenesis of factor dependent cell lines & promotion of megakaryocyte production in vivo. Human and mouse LIF exhibit a 78% identity in its amino acid sequence. Human LIF is as active on human cells as it is on mouse cells, though mouse LIF is about 1000 fold less active on human cells, than human LIF.

**Synonyms:**

LIF, HILDA, D factor, Melanoma-derived LPL inhibitor, MLPLI, Emfilermin

**Product images:**

Western analysis of recombinant Human / Mouse Leukemia Inhibitory Factor (LIF) using a polyclonal antibody [DP3525] directed against a highly pure recombinant Mouse LIF. There is a weak cross reactivity with the Human LIF ([AR26009PU-N]) visible.