

Product datasheet for DP3516S

PROX1 (C-term) Rabbit Polyclonal Antibody

Product data:

Product Type:	Primary Antibodies
Applications:	IF, IHC, WB
Recommended Dilution:	Western blotting: 1-5 µg/ml. Immunohistochemistry/Immunofluorescence: 1/750-1/1,000.
Reactivity:	Human, Mouse, Rat
Host:	Rabbit
Clonality:	Polyclonal
Immunogen:	Highly pure (> 95%) recombinant Human C-terminal part of the Homeobox Transcription Factor Prox-1 (Ala547-Glu737).
Specificity:	This antibody detect Prox-1 in the nucleus of lymphatic endothelial cells by immunostaining.
Formulation:	5 mM PBS pH 7.2 without preservatives State: Purified State: Lyophilized purified Ig fraction
Reconstitution Method:	Restore in sterile water to a concentration of 0.1-1.0 mg/ml.
Purification:	Protein A Chromatography
Conjugation:	Unconjugated
Storage:	Store lyophilized at 2-8°C for 6 months or at -20°C long term. After reconstitution store the antibody undiluted at 2-8°C for one month or (in aliquots) at -20°C long term. Avoid repeated freezing and thawing.
Stability:	Shelf life: one year from despatch.
Gene Name:	prospero homeobox 1
Database Link:	Entrez Gene 5629 Human Q92786



[View online »](#)

Background:

Prox-1 is a homeobox gene and acts as a master switch for lymphatic endothelial phenotype. Expression of Prox-1 in blood endothelial cells induces expression of other lymphatic marker genes. Together with Podoplanin, Prox-1 can be used to reliably distinguish lymphatic vessels from blood vessels. Prox-1 is expressed in CNS, eye, pancreas, liver and heart, and it is one of the most specific and reliable markers for lymphatic endothelial cells.

Synonyms:

PROX1

Note:

Always centrifuge vials before opening!

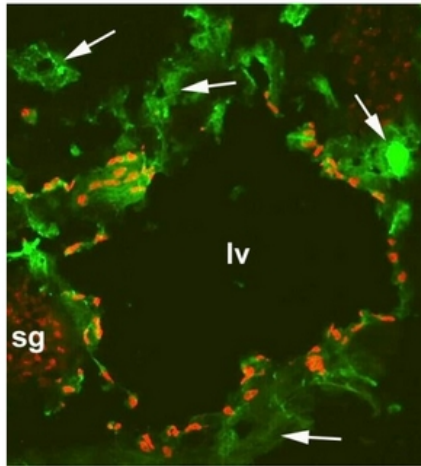
Product images:

Figure 1. Immunofluorescence with a Frozen Section of a Mouse embryo at day 13.5 with anti-CD31 [green] and anti-Human Prox-1 [red]. It shows a large lymphatic vessel (lv), blood vessels (arrows) and a sympathetic ganglion (sg) which is also positive for Prox-1 (Fig.1).