

## Product datasheet for **DP3516P**

### PROX1 (C-term) Rabbit Polyclonal Antibody

#### Product data:

Product Type:	Primary Antibodies
Applications:	ELISA, IF, IHC, WB
Recommended Dilution:	<b>Immunofluorescence:</b> Use 1/750-1/1000 dilution and 1 µg/ml on cells. <b>Western Blotting:</b> Use 1-5 µg/ml. <b>Immunohistochemistry.</b>
Reactivity:	Human, Mouse, Rat
Host:	Rabbit
Isotype:	IgG
Clonality:	Polyclonal
Immunogen:	Recombinant Human C-terminal part of the Homeobox Transcription Factor Prox-1 (homeo domain and prospero domain). ( <i>Cat.-No</i> DA3565)
Specificity:	This antibody will detect Prox-1 in the nucleus of lymphatic endothelial cells by Immunostaining. This antibody cross reacts with Equine Prox-1 in Immunohistochemistry using Paraffin-Embedded Sections (See Figure).
Formulation:	5mM PBS, pH 7.2 without preservatives State: Aff - Purified State: Lyophilized purified IgG fraction
Reconstitution Method:	Restore with distilled sterile water to a concentration of 0.1-1.0 mg/ml
Purification:	Antigen-Affinity Chromatography
Conjugation:	Unconjugated
Storage:	Store lyophilized at 2-8°C for 6 months or at -20°C long term. After reconstitution store the antibody undiluted at 2-8°C for one month or (in aliquots) at -20°C long term. Avoid repeated freezing and thawing.
Stability:	Shelf life: one year from despatch.
Database Link:	<a href="#">Entrez Gene 5629 Human Q92786</a>



[View online »](#)

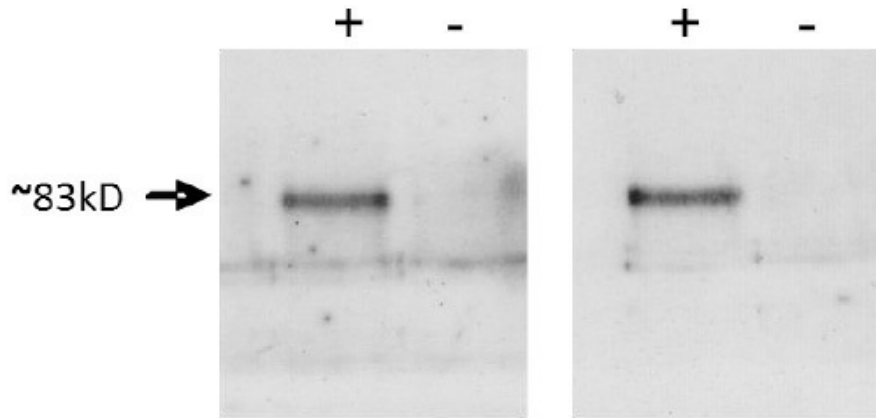
**Background:**

Prox-1 is a homeobox gene and acts as a master switch for lymphatic endothelial phenotype. Expression of Prox-1 in blood endothelial cells induces expression of other lymphatic marker genes. Together with Podoplanin, Prox-1 can be used to reliably distinguish lymphatic vessels from blood vessels. Prox-1 is expressed in CNS, eye, pancreas, liver and heart, and it is one of the most specific and reliable markers for lymphatic endothelial cells.

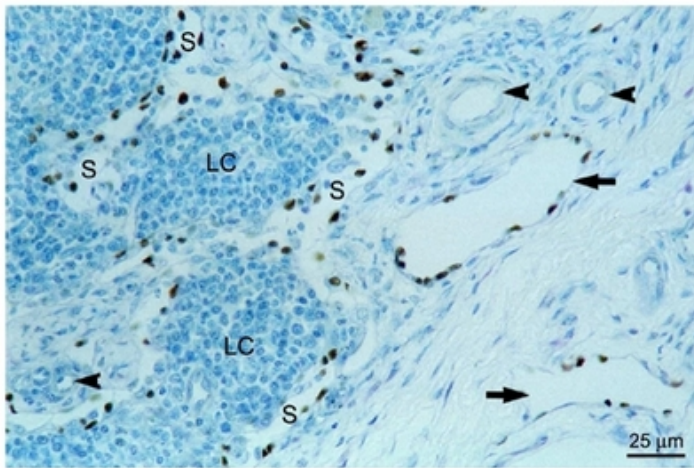
**Synonyms:**

PROX1

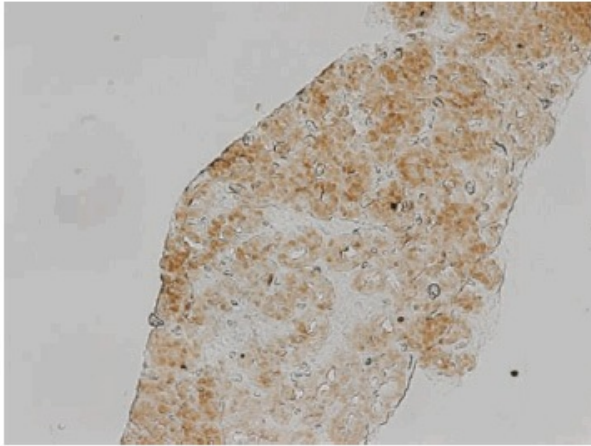
**Product images:**



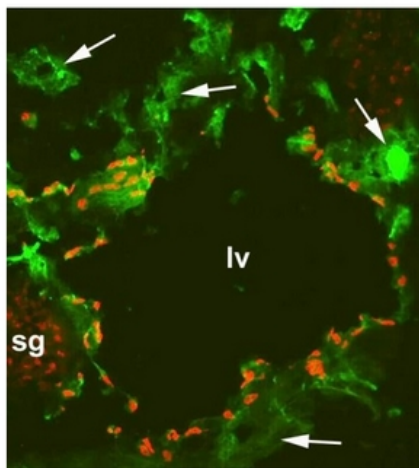
Western analysis with anti-human Prox-1 antibody [DP3516] (Left) and (Right).



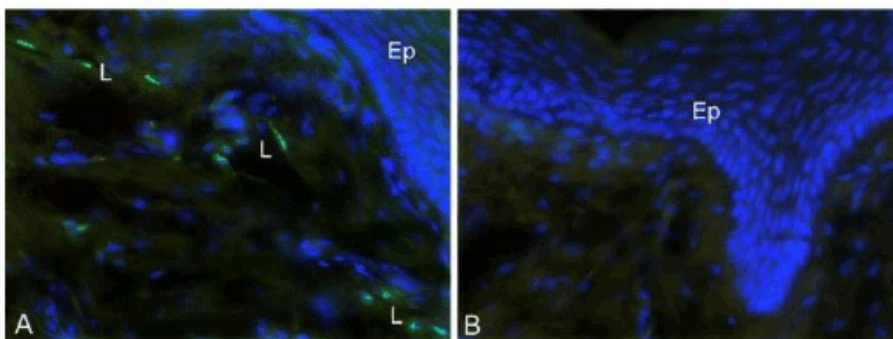
Cross reaction of anti-Human Prox-1 with Horse tissue sections: Equine mandibular lymph node, paraffin section, stained for Prox1 antibody counterstained with toluidine blue. Sinusoids (S) as well as lymphatic vessels in the hilum of the lymph node (arrows) are lined by positively stained lymphatic endothelial cells. Blood vascular endothelium remains unstained (arrow heads). LC: Cluster of lymphocytes. From: Staszuk, C., K. F. Dueterdieck, H. Gasseu. A. Bienert, Immunohistochemical identification of lymphatic vessels in the periodontium of equine cheek teeth. J. Vet. Dent. 22, 227-232, 2005



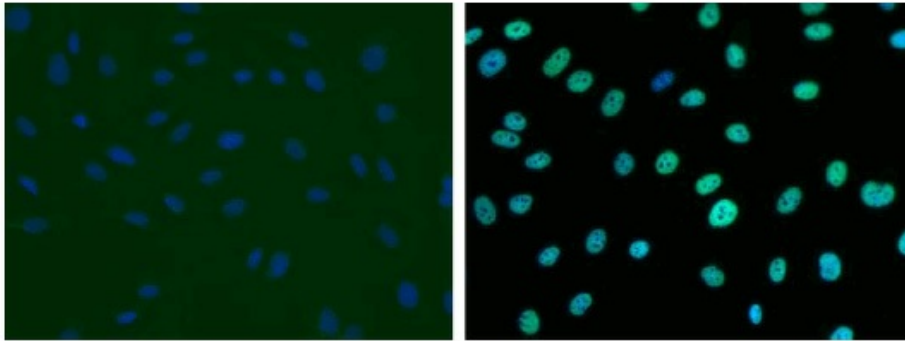
Prox1 protein in E15 chick pancreas tissue detected by immunohistochemistry studies (IHC) using a polyclonal Rabbit anti-Human Prox1 antibody at 1/400.



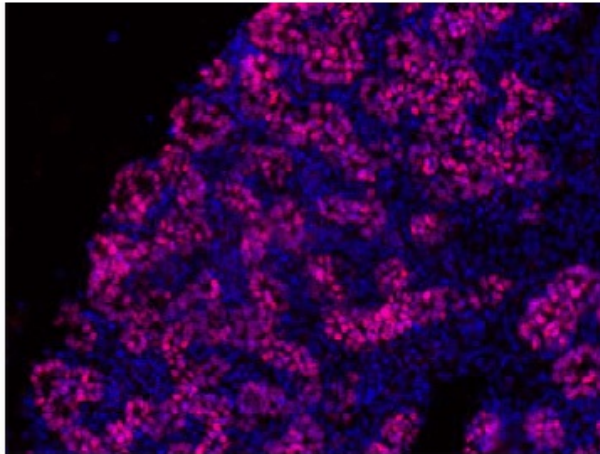
Immunofluorescence with a Frozen Sections of a Mouse embryo at day 13.5 with anti-CD31 [green] and anti-Human Prox-1 [red] ( [DP3516S]). It shows a large lymphatic vessel (lv), blood vessels (arrows) and a sympathetic ganglion (sg) which is also positiv for Prox-1 (Fig.1).



Immunofluorescence staining (green) of cryo-sections of human foreskin (fixed 15 min in 4% PFA) with anti-human Prox-1 (dilution 1:200) and counter staining of nuclei with Dapi. A) Note the specific green Prox-1 signal in the nuclei of lymphatics (L). Ep, epidermis. Specimen provided by Prof. Dr. J. Wilting, Goettingen.



Immunofluorescence staining (green) of primary human dermal lymphatic endothelial cells (HDLEC) with anti-human Prox-1 (1ug/ml) and counter staining of nuclei with Dapi. As secondary antibody goat anti-rabbit ALEXA Flour 488 was used 1:400.



Prox1 protein in E15 chick pancreas tissue detected by immunofluorescence studies (IF) using a polyclonal rabbit anti-human Prox1 antibody. [diluted: 1:200] Both experiments were performed by Andreia Margarido (de Santa Barbara's team); INSERM U1046, Montpellier, France