

Product datasheet for **DP3516**

PROX1 (C-term) Rabbit Polyclonal Antibody

Product data:

Product Type:	Primary Antibodies
Applications:	IF, IHC, WB
Recommended Dilution:	Western blot: 1-5 µg/ml. Immunofluorescence: 1/750-1/1000. Immunohistochemistry: The antibody works well with paraffin sections. A boiling step is recommended when staining paraffin-embedded tissues.
Reactivity:	Human, Mouse, Rat
Host:	Rabbit
Clonality:	Polyclonal
Immunogen:	Highly pure (>95%) recombinant Human, highly conserved C-terminal part of Prox1 (homeo domain and prospero domain) derived from E.coli (Cat.-No DA3565).
Specificity:	This antibody detects Prox-1 in the nucleus of lymphatic endothelial cells.
Formulation:	5mM PBS, pH 7.2 without stabilizer or preservative State: Purified State: Lyophilized purified IgG fraction
Reconstitution Method:	Restore in sterile water to a concentration of 0.1-1.0 mg/ml.
Purification:	Protein A Chromatography
Conjugation:	Unconjugated
Storage:	Store lyophilized at 2-8°C for 6 months or at -20°C long term. After reconstitution store the antibody undiluted at 2-8°C for one month or (in aliquots) at -20°C long term. Avoid repeated freezing and thawing.
Stability:	Shelf life: one year from despatch.
Gene Name:	prospero homeobox 1
Database Link:	Entrez Gene 5629 Human Q92786



[View online »](#)

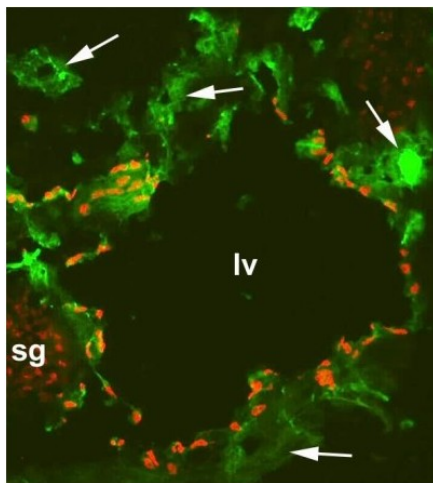
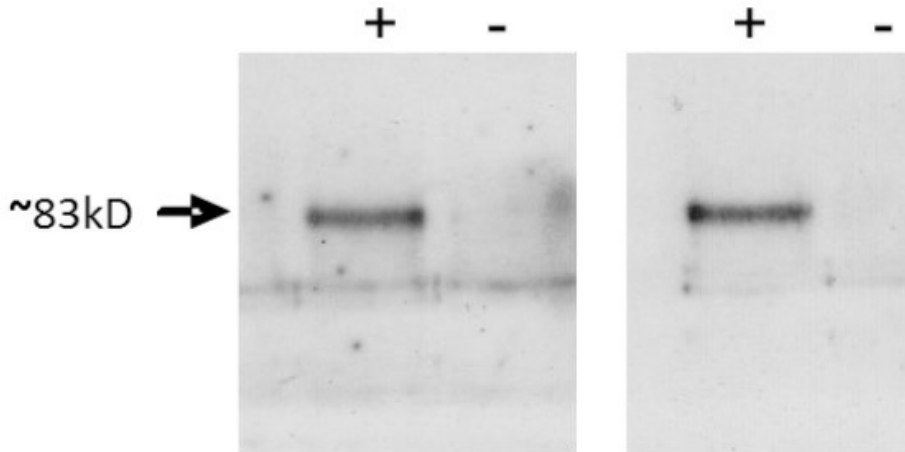
Background:

Prox-1 is a homeobox gene and acts as a master switch for lymphatic endothelial phenotype. Expression of Prox-1 in blood endothelial cells induces expression of other lymphatic marker genes. Together with Podoplanin, Prox-1 can be used to reliably distinguish lymphatic vessels from blood vessels. Prox1 is expressed in CNS, eye, pancreas, liver and heart, and it is one of the most specific and reliable markers for lymphatic endothelial cells.

Synonyms:

PROX1

Product images:



Immunofluorescence with a Frozen Section of a Mouse embryo at day 13.5 with anti-CD31 Antibody [Green] and anti-Human Prox-1 Antibody [red]. It shows a large lymphatic vessel (lv), blood vessels (arrows) and a sympathetic ganglion (sg) which is also positiv for Prox-1.