

Product datasheet for **DP3515**

BMP2 (+ BMP4) Rabbit Polyclonal Antibody

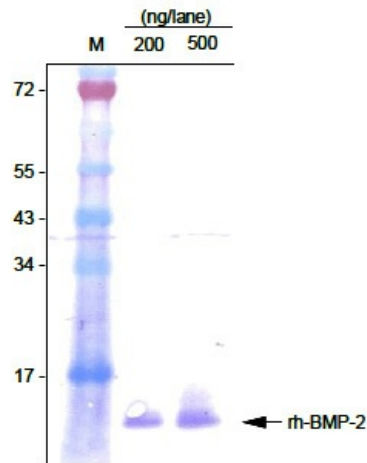
Product data:

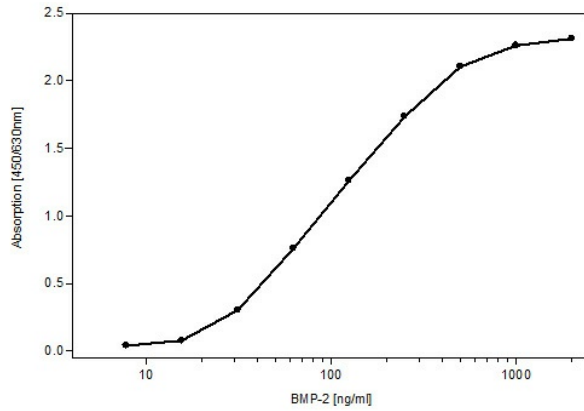
Product Type:	Primary Antibodies
Applications:	ELISA, IP, WB
Recommended Dilution:	ELISA: 2-5 µg/ml. Immunoprecipitation: 1-5 µg/ml. Western Blot: 1 µg/ml, it will detect 20 ng/lane of recombinant Human BMP-2/4-1 or BMP-2/4-2 under reducing conditions.
Reactivity:	Human
Host:	Rabbit
Clonality:	Polyclonal
Immunogen:	Highly purified Synthetic peptide C-terminal (20 amino acids) of Human BMP-2/4.
Specificity:	This polyclonal serum antibody DP3515 will detect Human BMP-2/4. The antibody displays cross-reaction with Human BMP-4 monomers in Western Blot.
Formulation:	PBS without preservatives State: Purified State: Lyophilized purified Ig fraction
Reconstitution Method:	Restore in sterile water to a concentration of 0.1-1.0 mg/ml. Centrifuge vial prior to opening.
Purification:	Protein A Chromatography
Conjugation:	Unconjugated
Storage:	Store lyophilized at 2-8°C for 6 months or at -20°C long term. After reconstitution store the antibody undiluted at 2-8°C for one month or (in aliquots) at -20°C long term. Avoid repeated freezing and thawing.
Stability:	Shelf life: one year from despatch.
Gene Name:	bone morphogenetic protein 2
Database Link:	Entrez Gene 650 Human P12643



[View online »](#)

Background:	Human Bone Morphogenetic Protein-2 (BMP-2) is a disulfide-bonded homodimeric protein with an apparent molecular weight of 26 kDa. BMP-2 regulates similarly to its nearest homologue BMP-4 diverse fundamental processes during embryonic development: BMP-2 and other BMP proteins have great potential for medical therapeutic applications, in particular because they allow or at least accelerate the ossification of extensive bone lesions. The amino acid sequence of recombinant human BMP-2 starts with MQAKHKQ (position 283) containing the Met from the E. coli expression vector.
Synonyms:	Bone morphogenetic protein 2, BMP-2, BMP-2A
Protein Families:	Adult stem cells, Cancer stem cells, Druggable Genome, Embryonic stem cells, ES Cell Differentiation/IPS, Induced pluripotent stem cells, Secreted Protein, Stem cell relevant signaling - TGFb/BMP signaling pathway, Transmembrane
Protein Pathways:	Acute myeloid leukemia, Basal cell carcinoma, Cytokine-cytokine receptor interaction, Endocytosis, Hedgehog signaling pathway, Hematopoietic cell lineage, Melanogenesis, Pathways in cancer, TGF-beta signaling pathway

Product images:



BMP-2 BioLISA using recombinant Human soluble BMP receptor 1A ([DA3521]) for capturing and recombinant Human BMP-2 ([DA3502X]) as standard. The polyclonal rabbit anti-human BMP-2 antibody in combination with a goat anti-rabbit-Biotin was used for detection.