

Product datasheet for **DP3501**

PROX1 (C-term) Rabbit Polyclonal Antibody

Product data:

Product Type:	Primary Antibodies
Applications:	IF, IHC, WB
Recommended Dilution:	Western blotting (1/1,000). Immunohistochemistry on Frozen and Paraffin Embedded Sections (1/500-1/1,000). Requires high temperature antigen unmasking for paraffin sections: citrate pH 6.0 at 100°C for 10 min.
Reactivity:	Human, Mouse, Rat, Zebrafish
Host:	Rabbit
Clonality:	Polyclonal
Immunogen:	Peptide corresponding to the Homeobox domain of Prox1.
Specificity:	This antibody is reactive with Prox-1. It will be a useful tool to study lymphatic vessel density in and around Human tumors. It will detect Prox-1 in the nucleus of lymphatic endothelial cells by Immunostaining or Immunohistochemistry.
Formulation:	State: Serum State: Whole Serum containing 50% Glycerol.
Conjugation:	Unconjugated
Storage:	Store the antibody (in aliquots) at -20°C. Avoid repeated freezing and thawing.
Stability:	Shelf life: one year from despatch.
Gene Name:	prospero homeobox 1
Database Link:	Entrez Gene 5629 Human Q92786



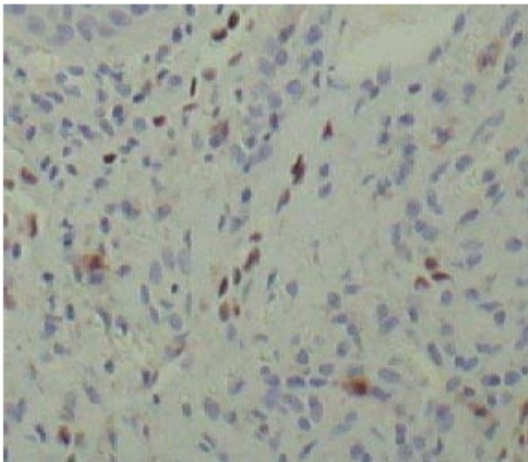
[View online »](#)

Background:

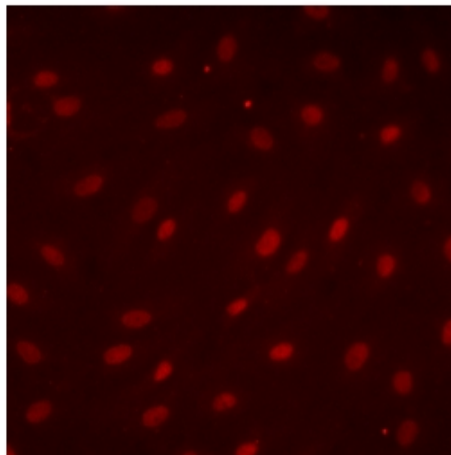
The homeobox gene Prox-1 was originally cloned by homology to the *Drosophila melanogaster* gene prospero. Prox-1 is expressed in a subpopulation of endothelial cells which by budding and sprouting, give rise to the lymphatic system. Prox-1-deficient homozygous mice have unaffected vasculogenesis and angiogenesis, but liver and lymphatics do not develop. Human Prox-1 gene has been mapped to chromosome 1q32.2-q32.3, and its product shows 94% similarity to the chicken protein. The conserved structure and expression pattern of the Prox-1 gene imply that it may play the same roles in humans as in other vertebrates. The human Prox-1 gene is most actively expressed in the developing lens. Anti-Prox-1 antibodies provide a highly specific marker of lymphatic endothelial cells.

Synonyms:

PROX1

Product images:

DP3501 PROX-1 Antibody Staining of Paraffin Embedded Human Mucosa Sections.



DP3501 PROX-1 Antibody Immunostaining of Human Lymphatic Endothelial Cells.