

Product datasheet for **DP3500B**

LYVE1 Rabbit Polyclonal Antibody

Product data:

Product Type:	Primary Antibodies
Applications:	FC
Recommended Dilution:	FACS analysis and Cell Sorting: Use at 2-5 µg/ml together with the appropriate secondary reagents. The unconjugated antibody can be used for ELISA experiments, Western blotting , FACS and Cell Sorting .
Reactivity:	Human
Host:	Rabbit
Clonality:	Polyclonal
Immunogen:	Recombinant Human soluble LYVE-1 (Ser24-Gly232) produced in insect cells.
Specificity:	The antibody recognizes Human LYVE-1. Other species not tested.
Formulation:	5mM PBS, pH 7.2 Label: Biotin State: Lyophilized purified IgG fraction Stabilizer: 50x BSA Preservative: 0.02% Sodium Azide
Reconstitution Method:	Restore with sterile water to a concentration of 0.1-1.0 mg/ml
Purification:	Antigen Affinity Chromatography
Conjugation:	Biotin
Storage:	Store lyophilized at 2-8°C for 6 months or at -20°C long term. After reconstitution store the antibody undiluted at 2-8°C for one month or (in aliquots) at -20°C long term. Avoid repeated freezing and thawing.
Stability:	Shelf life: one year from despatch.
Gene Name:	lymphatic vessel endothelial hyaluronan receptor 1
Database Link:	Entrez Gene 10894 Human Q9Y5Y7



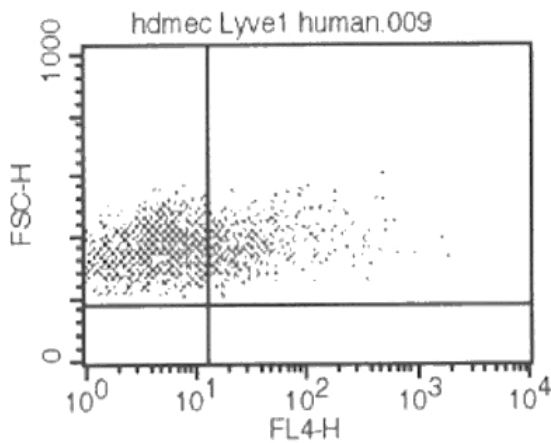
[View online »](#)

Background:

LYVE-1 has been identified as a major receptor for HA (extracellular matrix glycosaminoglycan hyaluronan) on the lymph vessel wall. The deduced amino acid sequence of LYVE-1 predicts a 322-residue type I integral membrane polypeptide 41% similar to the CD44 HA receptor with a 212-residue extracellular domain containing a single Link module the prototypic HA binding domain of the Link protein superfamily. Like CD44, the LYVE-1 molecule binds both soluble and immobilized HA. However, unlike CD44, the LYVE-1 molecule colocalizes with HA on the luminal face of the lymph vessel wall and is completely absent from blood vessels. Hence, LYVE-1 is the first lymph-specific HA receptor to be characterized and is a uniquely powerful marker for lymph vessels themselves.

Synonyms:

LYVE1, CRSBP-1, CRSBP1, HAR, XLKD1

Product images:

FACS analysis with Biotin conjugated LYVE-1 antibody using HDMVECs