

Product datasheet for DP153

Claudin 1 (CLDN1) Rabbit Polyclonal Antibody

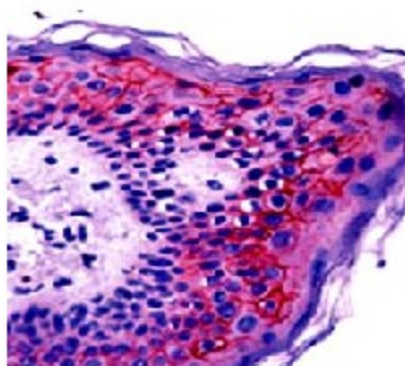
Product data:

Product Type:	Primary Antibodies
Applications:	IHC
Recommended Dilution:	Immunohistochemistry on Paraffin Sections: Dilute to a titer of 1/100-1/200 in an ABC method (incubation period of 30 minutes at room temperature). Formalin fixed paraffin embedded tissue sections require high temperature antigen unmasking with 10 mM citrate buffer, pH 6.0 prior to immunostaining. <i>Recommended Positive Control:</i> breast carcinoma, skin.
Reactivity:	Canine, Human, Mouse, Rat
Host:	Rabbit
Clonality:	Polyclonal
Immunogen:	Synthetic peptide corresponding to C-terminal of Human Claudin 1
Specificity:	The antibody recognizes Claudin 1. Cellular localization: Cytoplasmic, cell membrane.
Formulation:	State: Purified State: Liquid purified Ig fraction Preservative: 0.05% Sodium Azide
Conjugation:	Unconjugated
Storage:	Store undiluted at 2-8°C for one month or (in aliquots) at -20°C for longer. Avoid repeated freezing and thawing.
Stability:	Shelf life: one year from despatch.
Gene Name:	claudin 1
Database Link:	Entrez Gene 9076 Human O95832
Background:	Claudin 1-8 proteins are a family of transmembrane proteins associated with tight junctions. Tight junctions are specialized regions of cell to cell contact; made up of network of strands to act as a molecular gasket for preventing the leakage of ions, water etc. between cells. They are abundant in luminal epithelial sheets where they maintain epithelial cell polarity. Different tissues exhibit different claudin composition.
Synonyms:	CLD1, SEMP1, PRO944, UNQ481



[View online »](#)

Product images:



Formalin fixed paraffin embedded human skin stained with Claudin 1 antibody DP153 / DP153-05