

## Product datasheet for DP123

### Amyloid Precursor Protein (APP) Rabbit Polyclonal Antibody

#### Product data:

Product Type:	Primary Antibodies
Applications:	IHC
Recommended Dilution:	Immunohistochemistry on formalin-fixed paraffin sections: Use a 1/50 - 1/100 dilution in an ABC method (30 minutes at room temperature). Formalin fixed paraffin embedded tissue sections require high temperature antigen unmasking with 10 mM citrate buffer, pH 6.0 prior to immunostaining. Recommended positive control: brain.
Reactivity:	Human
Host:	Rabbit
Clonality:	Polyclonal
Immunogen:	A synthetic peptide corresponding to N-terminal of human APP
Specificity:	This antibody reacts with a 10 kD protein. It recognizes Amyloid precursor protein (b-APP770). Amyloid precursor protein (APP) and APP-like proteins are transmembrane glycoproteins with a similar modular domain structure. Cellular localization: cytoplasmic, extracellular.
Formulation:	State: Purified State: Purified immunoglobulin fraction containing sodium azide as preservative
Conjugation:	Unconjugated
Storage:	Store the antibody undiluted at 2-8°C for one month or (in aliquots) at -20°C for longer. Avoid repeated freezing and thawing.
Stability:	Shelf life: one year from despatch.
Gene Name:	amyloid beta precursor protein
Database Link:	<a href="#">Entrez Gene 351 Human P05067</a>



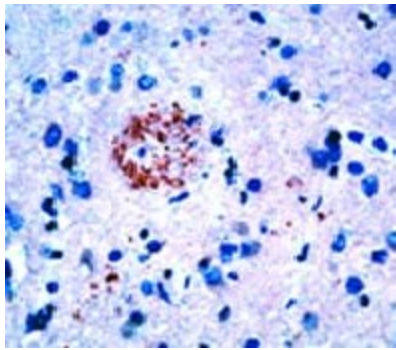
[View online »](#)

**Background:**

Amyloid beta precursor protein gene (ABPP) encodes a cell surface receptor and transmembrane precursor protein that is cleaved by secretases to form a number of peptides. Multiple transcript variants encoding several different isoforms have been found for this gene. Isoform APP695 is the predominant form in neuronal tissue, isoform APP751 and isoform APP770 are widely expressed in nonneuronal cells. Isoform APP751 is the most abundant form in T lymphocytes. ABPP is expressed in all fetal tissues examined with the highest levels in brain, kidney, heart and spleen with weak expression observed in liver; ABPP is induced during neuronal differentiation. In the adult brain, highest expression of ABPP gene is found in the frontal lobe of the cortex and in the anterior perisylvian cortex opercular gyri; moderate expression in the cerebellar cortex, the posterior perisylvian cortex opercular gyri and the temporal associated cortex. Weak expression is found in the striate, extra striate and motor cortices. Mutations in ABPP have been implicated in autosomal dominant Alzheimer disease and cerebroarterial amyloidosis (cerebral amyloid angiopathy).

**Synonyms:**

Alzheimer disease amyloid protein, Amyloid Precursor Protein, ABPP, APPI, PreA4, Cerebral vascular amyloid peptide, CVAP

**Product images:**

Formalin fixed paraffin embedded human Alzheimer's brain stained with Amyloid precursor protein antibody DP123 / DP123-05