

Product datasheet for **DP105-05**

Granzyme B (GZMB) Rabbit Polyclonal Antibody

Product data:

Product Type:	Primary Antibodies
Applications:	IHC
Recommended Dilution:	IHC
Reactivity:	Human, Mouse, Rat
Host:	Rabbit
Clonality:	Polyclonal
Immunogen:	A synthetic peptide from the N-terminus of human Granzyme B.
Formulation:	10 mM Citrate Buffer, pH 6.0 containing Sodium Azide as preservative.
Purification:	Liquid purified Ig fraction. Purified
Conjugation:	Unconjugated
Predicted Protein Size:	~25.5 kDa
Gene Name:	granzyme B
Database Link:	NP_004122 Entrez Gene 14939 Mouse Entrez Gene 171528 Rat Entrez Gene 3002 Human P10144

Background: Granzymes are neutral serine proteases, which are stored in specialized lytic granules of cytotoxic T lymphocytes (CTLs) and in natural killer (NK) cells. A number of granzymes (A to G) have been isolated and cloned. Human granzymes B is involved in target cell apoptosis during lymphocyte-mediated cytotoxicity. This antibody is useful in the localization of granzyme B containing lytic granules and for the characterization of activated CTLs or NK cells.

Synonyms: C11; CCPI; CGL-1; CGL1; CSP-B; CSPB; CTLA-1; CTLA1; CTSL1; Fragmentin-2; Granzyme-2; GRB; HLP; SECT

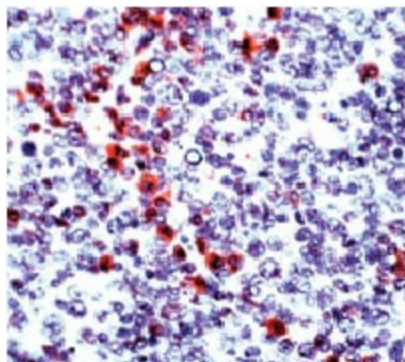
Protein Families: Druggable Genome, Protease

Protein Pathways: Allograft rejection, Autoimmune thyroid disease, Graft-versus-host disease, Natural killer cell mediated cytotoxicity, Type I diabetes mellitus



[View online »](#)

Product images:



Formalin fixed paraffin embedded human tonsil stained with Granzyme B antibody. DP105