

## Product datasheet for **DP063-05**

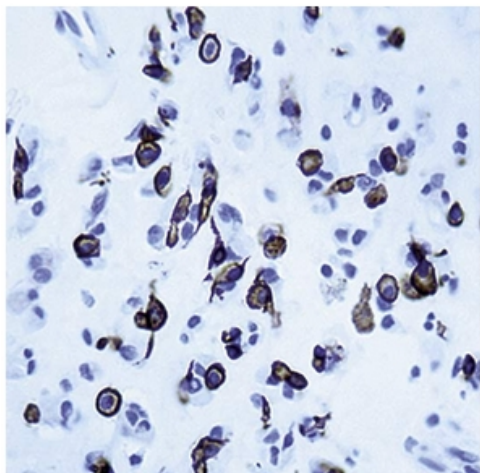
### **c Kit (KIT) (C-term) Rabbit Polyclonal Antibody**

#### **Product data:**

<b>Product Type:</b>	Primary Antibodies
<b>Applications:</b>	IHC
<b>Recommended Dilution:</b>	Immunohistochemistry on Paraffin Embedded Sections: Use 1/50-1/100 diluted antibody in an ABC method (30 minutes at room temperature). Recommended Positive Control: Tonsil.
<b>Reactivity:</b>	Canine, Human
<b>Host:</b>	Rabbit
<b>Clonality:</b>	Polyclonal
<b>Immunogen:</b>	A synthetic peptide from c-terminus of Human CD117/c-kit protein.
<b>Specificity:</b>	This antibody reacts with a 145 kD protein. This antibody can be used in the identification of gastrointestinal stromal tumors. Cellular Localization: Cell membrane, cytoplasm.
<b>Formulation:</b>	State: Purified State: Liquid purified Ig fraction containing Sodium Azide as preservative.
<b>Conjugation:</b>	Unconjugated
<b>Storage:</b>	Store the antibody undiluted at 2-8°C.
<b>Stability:</b>	Shelf life: one year from despatch.
<b>Gene Name:</b>	KIT proto-oncogene receptor tyrosine kinase
<b>Database Link:</b>	<a href="#">Entrez Gene 3815 Human P10721</a>
<b>Background:</b>	c-kits is expressed in many tissues and cells. c-kits is involved in the development of several lineages of stem cells, such as germ cells, neural crest derived melanocytes and hematopoietic precursor cells. This antibody can be used in the identification of gastrointestinal stromal tumors.
<b>Synonyms:</b>	SCFR, KIT



[View online »](#)

**Product images:**

Formalin fixed paraffin embedded human gastrointestinal stromal tumor stained with CD117/c-kit antibody (Cat. #DP063)