

## Product datasheet for DP028

### Lysozyme (LYZ) Rabbit Polyclonal Antibody

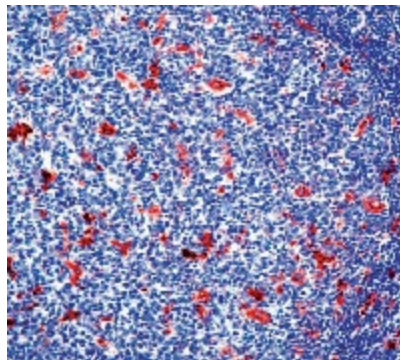
#### Product data:

Product Type:	Primary Antibodies
Applications:	IHC
Recommended Dilution:	Immunohistochemistry on formalin-fixed paraffin embedded sections: diluted of 1:50-1:100 in an ABC method (30 minutes at room temperature) Recommended Positive Control: Tonsil
Reactivity:	Human
Host:	Rabbit
Clonality:	Polyclonal
Immunogen:	Lysozyme isolated from urine of patients with monocytic leukemia.
Specificity:	This antibody reacts with lysozyme. Cellular Localization: Cytoplasmic
Formulation:	containing < 0.1 % sodium azide as preservative State: Purified State: Liquid Ig fraction
Conjugation:	Unconjugated
Storage:	Store the antibody undiluted at 2-8°C for one month or (in aliquots) at -20°C for longer. Avoid repeated freezing and thawing.
Stability:	Shelf life: one year from despatch.
Gene Name:	lysozyme
Database Link:	<a href="#">Entrez Gene 4069 Human P61626</a>
Background:	It stains granulocytes, monocytes and macrophages in human tonsil, skin and colon.
Synonyms:	LYZ, LZM



[View online »](#)

**Product images:**



Formalin fixed paraffin embedded human tonsil stained with Lysozyme antibody. DP028