

Product datasheet for **DP014-05**

GFAP Rabbit Polyclonal Antibody

Product data:

Product Type:	Primary Antibodies
Applications:	IHC
Recommended Dilution:	Immunohistochemistry on Formalin-Fixed Paraffin Embedded Sections: This antibody may be diluted to a titer of 1/50-1/250 using a polymer detection system (30 minutes at Room Temperature). Heat induced antigen retrieval with 10 mM citrate buffer, pH 6.0 is recommended. Recommended Positive Control: Brain.
Reactivity:	Bovine, Chicken, Feline, Guinea Pig, Hamster, Human, Kangaroo, Monkey, Mouse, Rat, Sheep
Host:	Rabbit
Clonality:	Polyclonal
Immunogen:	GFAP isolated from Cow spinal cord.
Specificity:	This antibody reacts with GFAP. In the central nervous system, this antibody stains Astrocytes and some groups of Ependymal cells. However, in the peripheral nervous system, it stains Schwann cells, satellite cells and enteric glial cells. Cellular Localization: Cytoplasmic.
Formulation:	State: Purified State: Liquid purified Ig fraction Preservative: < 0.1% Sodium Azide
Conjugation:	Unconjugated
Storage:	Store undiluted at 2-8°C.
Stability:	Shelf life: one year from despatch.
Gene Name:	glial fibrillary acidic protein
Database Link:	Entrez Gene 2670 Human P14136



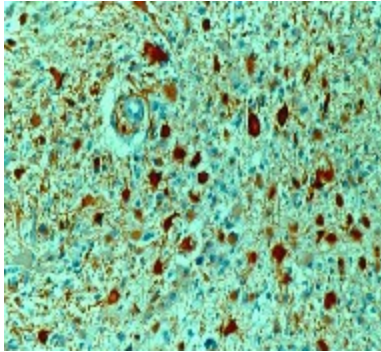
[View online »](#)

Background:

Glial fibrillary acidic protein (GFAP) is a member of the class III intermediate filament protein family. It is heavily, and specifically, expressed in astrocytes and certain other astroglia in the central nervous system, in satellite cells in peripheral ganglia, and in non myelinating Schwann cells in peripheral nerves. In addition, neural stem cells frequently strongly express GFAP. Antibodies to GFAP are therefore very useful as markers of astrocytic cells. In addition many types of brain tumor, presumably derived from astrocytic cells, heavily express GFAP. GFAP is also found in the lens epithelium, Kupffer cells of the liver, in some cells in salivary tumors and has been reported in erythrocytes.

Synonyms:

Glial Fibrillary Acidic Protein

Product images:

Formalin fixed paraffin embedded human astrocytoma stained with GFAP antibody DP014 / DP014-05