

## Product datasheet for **DP008-05**

### Chromogranin A (CHGA) Rabbit Polyclonal Antibody

#### Product data:

Product Type:	Primary Antibodies
Applications:	IHC
Recommended Dilution:	Immunohistochemistry on Paraffin Embedded Sections: 1/20-1/50 in an ABC method (30-60 minutes at room temperature) <i>Recommended Positive Control: Pancreas.</i>
Reactivity:	Human
Host:	Rabbit
Clonality:	Polyclonal
Immunogen:	C-terminal half of chromogranin A was purified from urine of patients with carcinoid syndrome.
Specificity:	This antibody reacts with human Chromogranin A in the neuroendocrine cells and neural tissues. It does not recognize the epitopes located on the N-terminal half of the chromogranin A molecule. Cellular Localization: Cytoplasmic.
Formulation:	10 mM Citrate buffer, pH 6.0 containing Sodium Azide as preservative. State: Purified State: Liquid purified Ig fraction
Conjugation:	Unconjugated
Storage:	Store the antibody undiluted at 2-8°C for one month or (in aliquots) at -20°C for longer. Avoid repeated freezing and thawing.
Stability:	Shelf life: one year from despatch.
Gene Name:	chromogranin A
Database Link:	<a href="#">Entrez Gene 1113 Human P10645</a>



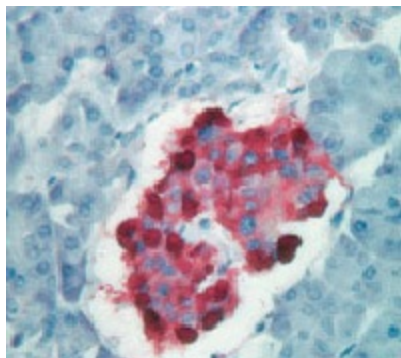
[View online »](#)

**Background:**

Chromogranin A (a protein of 439 amino acids which is encoded on chromosome 14) is present in neuroendocrine cells throughout the body, including the neuroendocrine cells of the large and small intestine, adrenal medulla and pancreatic islets. It is an excellent marker for carcinoid tumors, pheochromocytomas, paragangliomas, and other neuroendocrine tumors. Coexpression of chromogranin A and neuron specific enolase (NSE) is common in neuroendocrine neoplasms.

**Synonyms:**

Chromogranin-A, CgA, CHGA, SP-1

**Product images:**

Formalin fixed paraffin embedded human pancreas stained with Chromogranin A antibody. DP008