

Product datasheet for **DP006-05**

Her2 (ERBB2) Rabbit Polyclonal Antibody

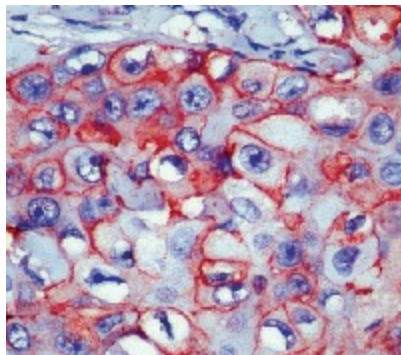
Product data:

Product Type:	Primary Antibodies
Applications:	IHC
Recommended Dilution:	Immunohistochemistry on paraffin embedded sections: diluted of 1:25-1:50 in an ABC method (30 minutes at room temperature) Although not required, high temperature treatment may enhance the immunostaining in overfixed tissues. Recommended Positive Control: Breast carcinoma
Reactivity:	Human
Host:	Rabbit
Clonality:	Polyclonal
Immunogen:	Keyhole limpet hemocyanin conjugated synthetic human peptide c-erbB-2 oncoprotein.
Specificity:	This antibody reacts with the c-erbB-2 oncoprotein, a 190 kD protein. Cellular Localization: Cell membrane
Formulation:	containing azide as preservative. State: Purified State: Liquid purified antiserum
Conjugation:	Unconjugated
Storage:	Store the antibody undiluted at 2-8°C for one month or (in aliquots) at -20°C for longer. Avoid repeated freezing and thawing.
Stability:	Shelf life: one year from despatch.
Gene Name:	erb-b2 receptor tyrosine kinase 2
Database Link:	Entrez Gene 2064 Human P04626
Background:	The proto-oncogene for c-erbB-2 is located on the human chromosome 17, band 21. It has structural similarities to EGFR. Several studies have indicated that c-erbB-2 may be a good indicator of the prognosis of human carcinomas in the breast, ovary, uterus and gastrointestinal tract.
Synonyms:	HER-2, NEU, p185erbB2, NGL, c-erbB-2, MNL19



[View online »](#)

Product images:



Formalin fixed paraffin embedded human breast carcinoma stained with c-erbB-2 antibody. DP006