

## Product datasheet for DP005

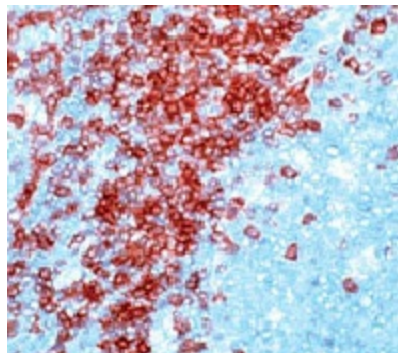
### CD3E Rabbit Polyclonal Antibody

#### Product data:

|                       |  |
|-----------------------|--|
| Product Type:         | Primary Antibodies   |
| Applications:         | IHC  |
| Recommended Dilution: | Immunohistochemistry on formalin-fixed paraffin embedded sections:<br>diluted of 1:10-1:50 in an ABC method (30 minutes at room temperature)<br>Recommended Positive Control: Tonsil |
| Reactivity:           | Human  |
| Host:                 | Rabbit   |
| Clonality:            | Polyclonal   |
| Immunogen:            | Synthetic human CD3 polypeptide conjugated to bovine serum albumin.  |
| Specificity:          | This antibody reacts with intracytoplasmic portion of the CD3 antigen on the T cells.<br>Cellular Localization: Cell membrane  |
| Formulation:          | containing 0.5% BSA and 0.05% sodium azide<br>State: Purified<br>State: Liquid Ig fraction   |
| Conjugation:          | Unconjugated   |
| Storage:              | Store the antibody undiluted at 2-8°C for one month or (in aliquots) at -20°C for longer.<br>Avoid repeated freezing and thawing.  |
| Stability:            | Shelf life: one year from despatch.  |
| Gene Name:            | CD3e molecule  |
| Database Link:        | <a href="#">Entrez Gene 916 Human P07766</a>   |
| Background:           | It stains T cells in cortex as well as medulla of the thymus and lymphoid tissues. This antibody also labels T cell neoplasm, malignant histiocytes and in Hodgkin's disease.        |
| Synonyms:             | T3/Leu-4   |



[View online »](#)

**Product images:**

Formalin fixed paraffin embedded human tonsil stained with CD3 antibody. DP005