

## Product datasheet for **DP005-05**

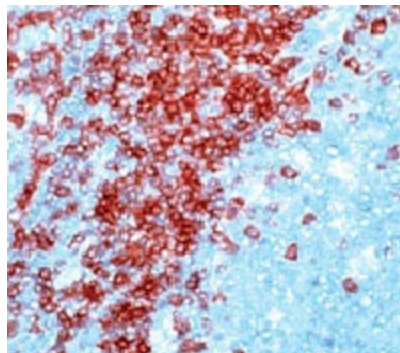
### CD3E Rabbit Polyclonal Antibody

#### Product data:

Product Type:	Primary Antibodies
Applications:	IHC
Recommended Dilution:	Immunohistochemistry on formalin-fixed paraffin embedded sections: diluted of 1:10-1:50 in an ABC method (30 minutes at room temperature) Recommended Positive Control: Tonsil
Reactivity:	Human
Host:	Rabbit
Clonality:	Polyclonal
Immunogen:	Synthetic human CD3 polypeptide conjugated to bovine serum albumin.
Specificity:	This antibody reacts with intracytoplasmic portion of the CD3 antigen on the T cells. Cellular Localization: Cell membrane
Formulation:	containing 0.5% BSA and 0.05% sodium azide State: Purified State: Liquid Ig fraction
Conjugation:	Unconjugated
Storage:	Store the antibody undiluted at 2-8°C for one month or (in aliquots) at -20°C for longer. Avoid repeated freezing and thawing.
Stability:	Shelf life: one year from despatch.
Gene Name:	CD3e molecule
Database Link:	<a href="#">Entrez Gene 916 Human P07766</a>
Background:	It stains T cells in cortex as well as medulla of the thymus and lymphoid tissues. This antibody also labels T cell neoplasm, malignant histiocytes and in Hodgkin's disease.
Synonyms:	T3/Leu-4



[View online »](#)

**Product images:**

Formalin fixed paraffin embedded human tonsil stained with CD3 antibody. DP005