

## Product datasheet for **DM430-05**

### MLH1 Mouse Monoclonal Antibody [Clone ID: G168-15]

#### Product data:

Product Type:	Primary Antibodies
Clone Name:	G168-15
Applications:	IHC
Recommended Dilution:	Immunohistochemistry on formalin-fixed paraffin embedded sections: Dilute 1/25-1/50 in an ABC method (30 to 60 minutes at room temperature). Formalin fixed paraffin embedded tissue sections require high temperature antigen unmasking with 10 mM citrate buffer, pH 6.0 prior to immunostaining. Recommended Positive Control: Tonsil, colon carcinoma.
Reactivity:	Hamster, Human, Rat
Host:	Mouse
Isotype:	IgG1
Clonality:	Monoclonal
Immunogen:	Full length recombinant MLH.
Specificity:	The G168-15 antibody recognizes MLH1 80-85kDa. Cellular Localization: Nuclear
Formulation:	State: Supernatant State: Liquid Supernatant containing Sodium Azide as preservative.
Conjugation:	Unconjugated
Storage:	Store the antibody undiluted at 2-8°C for one month or (in aliquots) at -20°C for longer. Avoid repeated freezing and thawing.
Stability:	Shelf life: one year from despatch.
Gene Name:	mutL homolog 1
Database Link:	<a href="#">Entrez Gene 4292 Human P40692</a>



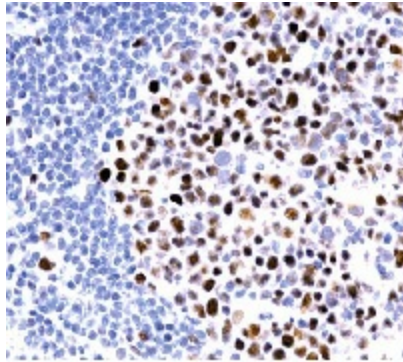
[View online »](#)

**Background:**

The repair of mismatch DNA is essential to maintaining the integrity of genetic information over time. An alteration of microsatellite repeats is the result of slippage owing to strand misalignment during DNA replication and is referred to as microsatellite instability (MSI). These defects in DNA repair pathways have been related to human carcinogenesis. The importance of mismatch repair genes became apparent with the identification of the genetic basis for hereditary nonpolyposis colon cancer (HNPCC). MSH-2 is involved in the initial cognition of mismatch nucleotides during the replication mismatch repair process. It is thought that after MSH2 binds to a mismatched DNA duplex it is joined by a heterodimer of MLH1 and PMSH, which together help facilitate the later steps in mismatch repair.

**Synonyms:**

DNA mismatch repair protein Mlh1, COCA2

**Product images:**

Formalin fixed paraffin embedded human tonsil stained with MLH-1 antibody DM430/DM430-05