

Product datasheet for **DM429-05**

MSH6 Mouse Monoclonal Antibody [Clone ID: 44]

Product data:

Product Type:	Primary Antibodies
Clone Name:	44
Applications:	IHC, IP, WB
Recommended Dilution:	Immunoprecipitation. Western Blot: 1/100-1/500. Immunohistochemistry on Formalin-Fixed Paraffin Embedded Sections: 1/25-1/50 in an ABC method (30 to 60 minutes at room temperature (requires high temperature antigen unmasking with 10 mM citrate buffer, pH 6.0 prior to immunostaining). Immunohistochemistry on Frozen Sections. Recommended Positive Control: Tonsil, colon carcinoma
Reactivity:	Canine, Human, Mouse, Rat
Host:	Mouse
Isotype:	IgG1
Clonality:	Monoclonal
Immunogen:	Synthetic human MSH6 peptide
Specificity:	MSH6 is a heterodimer of MSH2 binds to DNA containing G/T mismatches. The MSH2-MSH6 complex recognizes a single-based mispair insertion/deletion loop. Cellular Localization: Nuclear.
Formulation:	State: Supernatant State: Liquid purified Ig fraction containing Sodium Azide as preservative.
Purification:	Affinity Chromatography.
Conjugation:	Unconjugated
Storage:	Store the antibody undiluted at 2-8°C for one month or (in aliquots) at -20°C for longer. Avoid repeated freezing and thawing.
Stability:	Shelf life: one year from despatch.
Gene Name:	mutS homolog 6
Database Link:	Entrez Gene 2956 Human P52701



[View online »](#)

Background:

An alteration of microsatellite repeats is the result of slippage owing to strand misalignment during DNA replication and is referred to as microsatellite instability (MSI). These defects in DNA repair pathways have been related human carcinogenesis. Studies have shown the mutations of MLH-1, MSH2 and MSH6 genes contribute to the development of sporadic colorectal carcinoma. The repair of mismatch DNA is essential to maintaining the integrity of genetic information over time.

Synonyms:

DNA mismatch repair protein Msh6, GTBP

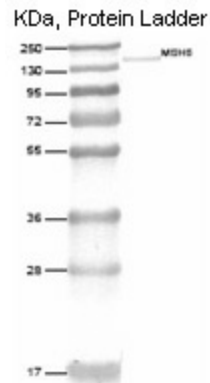
Product images:


Figure 1. Western blot analysis of human lung cell extract with MSH6 antibody DM429.

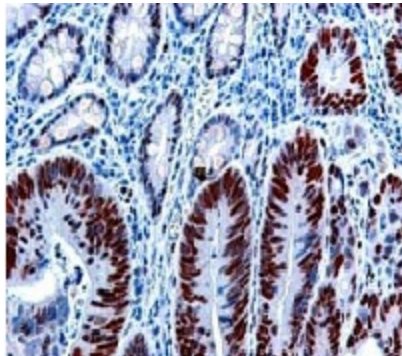


Figure 1. Immunohistochemical staining of human colon carcinoma using anti-MSH6 antibody DM429.