

## Product datasheet for **DM428**

### Melanoma (pan) Mouse Monoclonal Antibody [Clone ID: cocktail]

#### Product data:

Product Type:	Primary Antibodies
Clone Name:	cocktail
Applications:	IHC
Recommended Dilution:	<b>Immunohistochemistry on Formalin-Fixed Paraffin Embedded Sections:</b> Use a dilution of 1/25-1/50 in an ABC method (30 minutes at room temperature). Formalin fixed paraffin embedded tissue sections require high temperature antigen unmasking with 10mM Citrate buffer, pH 6.0 prior to immunostaining. <b>Recommended Positive Control:</b> Metastatic melanoma in lymph node.
Reactivity:	Human
Host:	Mouse
Isotype:	cocktail
Clonality:	Monoclonal
Immunogen:	Pigmented Melanoma metastases from lymph nodes (HMB45). Recombinant Human MART-1 protein (A103). Recombinant Tyrosinase protein (T311).
Specificity:	The HMB45 clone reacts with a neuraminidase-sensitive oligosaccharide side chain of a glycoconjugate present in immature melanosomes. The combination of HMB45 and the MART-1 and Tyrosinase make this triple antibody cocktail a first-order pan melanoma screener. Cellular Localization: Cytoplasmic.
Formulation:	State: Supernatant State: Liquid Ig Cocktail Preservative: < 0.1% Sodium Azide
Conjugation:	Unconjugated
Storage:	Store undiluted at 2-8°C for one month or (in aliquots) at -20°C for longer. Avoid repeated freezing and thawing.
Stability:	Shelf life: one year from despatch.



[View online »](#)

**Background:**

The HMB45-reactive antigen is present in cutaneous melanocytes, prenatal and infantile retinal pigment epithelium and melanoma cells and is thought to be oncofetal in nature. This antibody has been shown to label the majority of melanomas. The MART-1/Melan A recognizes a protein of 18kDa, identified at MART-1 (Melanoma Antigen Recognized by T cells 1) or Melan-A. Melan-A is a useful addition to melanoma panels as it is apparently specific for melanocytic lesions. Studies have also shown that MART-1 is more sensitive than HMB45 when labeling metastatic melanomas. Tyrosinase is a key enzyme involved in the initial stages of melanin biosynthesis. Studies have shown Tyrosinase to be a more sensitive marker when compared to HMB45 and MART-1. It has also shown to label a higher percentage of desmoplastic melanomas than HMB45.

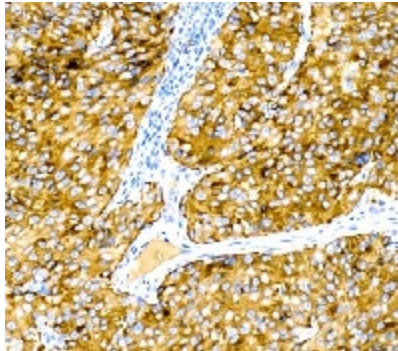
**Synonyms:**

Melanoma marker

**Note:**

**Clone:** HMB45 + A103 + T311

**Isotype:** IgG1/k + IgG1 + IgG2a

**Product images:**

Formalin Fixed Paraffin Embedded Human lymph node stained with Pan Melanoma Cocktail Antibody Cat.-No DM428