

## Product datasheet for **DM422-05**

### CD3E Mouse Monoclonal Antibody [Clone ID: F7.2.38]

#### Product data:

|                       |   |
|-----------------------|---|
| Product Type:         | Primary Antibodies  |
| Clone Name:           | F7.2.38   |
| Applications:         | IHC   |
| Recommended Dilution: | <b>Immunohistochemistry on Formalin-Fixed Paraffin Embedded Sections:</b> Use at 1/10-1/25 dilution in an ABC method (30-60 minutes at room temperature. High temperature treatment of formalin-fixed tissue sections with 1 mM EDTA buffer, pH 9.0 must be performed prior to the immunostaining.<br><b>Immunohistochemistry on Frozen Sections</b> (Not tested)<br><b>Recommended Positive Control:</b> Tonsil. |
| Reactivity:           | Human   |
| Host:                 | Mouse   |
| Isotype:              | IgG1  |
| Clonality:            | Monoclonal  |
| Immunogen:            | Purified CD3 $\epsilon$ $\gamma$ $\delta$ /CD3 $\omega$   |
| Specificity:          | This antibody labels CD3 and is useful tool for the identification of T cells and related neoplasms.<br>Cellular Localization: Membrane and cytoplasmic.  |
| Formulation:          | State: Supernatant<br>State: Liquid tissue culture supernatant<br>Preservative: <0.1 Sodium Azide   |
| Conjugation:          | Unconjugated  |
| Storage:              | Store undiluted at 2-8°C for one month or (in aliquots) at -20°C for longer.<br>Avoid repeated freezing and thawing.  |
| Stability:            | Shelf life: one year from despatch.   |
| Gene Name:            | CD3e molecule   |
| Database Link:        | <a href="#">Entrez Gene 916 Human P07766</a>  |

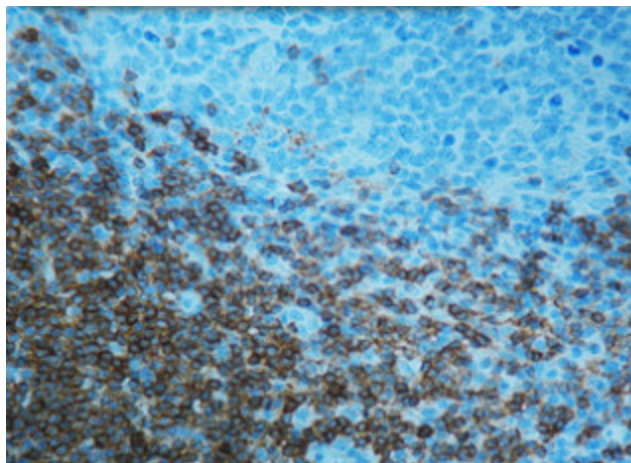


[View online »](#)

**Background:** CD3 is first detectable in early Thymocytes and its appearance probably represents one of the earliest signs of commitment to T cell lineage. In cortical Thymocytes, the antigen is predominantly present as an intracytoplasmic constituent.

**Synonyms:** T3/Leu-4

**Product images:**



Formalin fixed paraffin embedded human tonsil stained with CD3 antibody (DM422)