

## Product datasheet for **DM406**

### EPCAM Mouse Monoclonal Antibody [Clone ID: Ber-EP4]

#### Product data:

Product Type:	Primary Antibodies
Clone Name:	Ber-EP4
Applications:	IHC
Recommended Dilution:	<b>Immunohistochemistry on Formalin-Fixed Paraffin Embedded Sections:</b> Use at 1/50-1/150 dilution in an ABC method (30 minutes at RT). Formalin fixed paraffin embedded tissue sections require high temperature antigen unmasking with 10 mM citrate buffer, pH 6.0 prior to immunostaining. <b>Recommended Positive Control:</b> Kidney.
Reactivity:	Human
Host:	Mouse
Isotype:	IgG1
Clonality:	Monoclonal
Immunogen:	BALB/C mice were immunized with human breast carcinoma cell line, MCF-7.
Specificity:	Recognizes Human Epithelial Antigen. Other species not tested. <b>Cellular Localization:</b> Cell membrane.
Formulation:	State: Supernatant State: Liquid Tissue Culture Supernatant Preservative: Less than 0.1% Sodium Azide
Conjugation:	Unconjugated
Storage:	Store undiluted at 2-8°C for one month or (in aliquots) at -20°C for longer. Avoid repeated freezing and thawing.
Stability:	Shelf life: one year from despatch.
Gene Name:	epithelial cell adhesion molecule
Database Link:	<a href="#">Entrez Gene 4072 Human P16422</a>

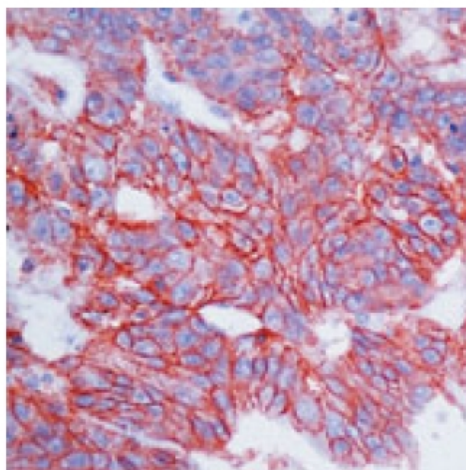


[View online »](#)

**Background:** Epithelial antigen is cell surface glycoprotein and is broadly distributed in epithelial cells and displays a highly conserved expression in carcinomas. Epithelial antigen has been known to play an important role as tumor-cell marker in lymph nodes from patients with esophageal carcinoma. Epithelial antigen can be used to distinguish between basal cell and basosquamous carcinomas and squamous cell carcinoma of the skin.

**Synonyms:** Ep-CAM, Epithelial cell adhesion molecule, GA733-2, EGP314, KSA, TROP1, Trop-1, M1S2, M4S1, MIC18

**Product images:**



DM406 clone Ber-EP4 Ep-CAM Antibody Staining of Formalin-Fixed, Paraffin-Embedded Human breast carcinoma using peroxidase-conjugate and AEC chromogen. Note cell membrane staining of tumor cells.