

## Product datasheet for **DM399-05**

### Synaptophysin (SYP) Mouse Monoclonal Antibody [Clone ID: SYP02]

#### Product data:

Product Type:	Primary Antibodies
Clone Name:	SYP02
Applications:	IHC
Recommended Dilution:	<b>Immunohistochemistry on Paraffin Embedded Sections:</b> use at 1/25-1/50 dilution in an ABC method (30 minutes at room temperature) <b>Recommended Positive Control:</b> Pancreas
Reactivity:	Human, Rat
Host:	Mouse
Isotype:	IgG1
Clonality:	Monoclonal
Immunogen:	BALB/C mice were injected with a synthetic peptide encoding a region near the c-terminal end of the synaptophysin protein.
Specificity:	This antibody is specific to 38 kD protein. This antibody reacts with neuroendocrine neoplasms of neural as well as epithelial types. <b>Cellular Localization:</b> Cytoplasmic.
Formulation:	10 mM citrate buffer, pH 6.0 State: Supernatant State: Liquid Tissue Culture Supernatant Preservative: < 0.1% Sodium Azide
Conjugation:	Unconjugated
Storage:	Store undiluted at 2-8°C for one month or (in aliquots) at -20°C for longer. Avoid repeated freezing and thawing.
Stability:	Shelf life: one year from despatch.
Gene Name:	synaptophysin
Database Link:	<a href="#">Entrez Gene 24804 Rat</a> <a href="#">Entrez Gene 6855 Human</a> <a href="#">P08247</a>



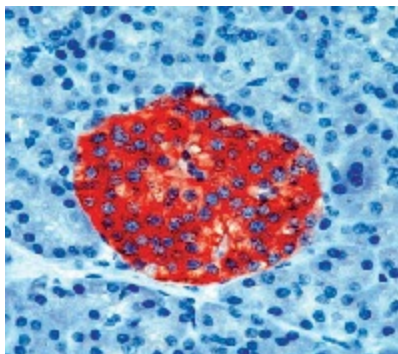
[View online »](#)

**Background:** Synaptophysin is a glycoprotein occurring in presynaptic vesicles of neurons in the brain, spinal cord, retina, vesicles of adrenal medulla and in neuromuscular junctions. This antibody reacts with neuroendocrine neoplasms of neural as well as epithelial types.

**Synonyms:** Neuroendocrine Marker

**Protein Families:** Secreted Protein, Transmembrane

**Product images:**



Formalin fixed paraffin embedded human pancreas stained with Synaptophysin antibody. DM399