

Product datasheet for **DM3589P**

Ly6g Rat Monoclonal Antibody [Clone ID: 6D17]

Product data:

Product Type:	Primary Antibodies
Clone Name:	6D17
Applications:	FC, IHC
Recommended Dilution:	FACS analysis: 1/500-1/2000. Immunohistochemistry on Paraffin Sections: 1/100-1/400.
Reactivity:	Mouse
Host:	Rat
Isotype:	IgG2
Clonality:	Monoclonal
Immunogen:	Cell lysates of Mouse Neutrophils. Hybridoma: Mouse myeloma fused with spleen cells from a Rat.
Specificity:	The Ly-6G antibody has been used to identify peripheral blood neutrophils and deplete granulocytes <i>in vivo</i> .
Formulation:	PBS without additives State: Purified State: Lyophilized (0.2 µm filtered) purified Ig fraction
Reconstitution Method:	Restore with 200 µl sterile PBS (final concentration = 500 µg/ml).
Purification:	Affinity Chromatography on Protein A/G
Conjugation:	Unconjugated
Storage:	Store lyophilized at 2-8°C for 6 months or at -20°C long term. After reconstitution store the antibody undiluted at 2-8°C for one month or (in aliquots) at -20°C long term. Avoid repeated freezing and thawing.
Stability:	Shelf life: one year from despatch.
Gene Name:	lymphocyte antigen 6 complex, locus G
Database Link:	Entrez Gene 546644 Mouse P35461



[View online »](#)

Background:

Gr-1 is a 21-25 kD protein also known as Ly-6G/Ly-6C. This myeloid differentiation antigen is a glycosylphosphatidylinositol (GPI)-linked protein expressed on granulocytes and macrophages. In bone marrow, the expression levels of Gr-1 directly correlate with granulocyte differentiation and maturation. Gr-1 is also transiently expressed on bone marrow cells in the monocyte lineage. Gr-1+ cells have recently been implicated in the development of antitumor responses.

Synonyms:

Gr-1 Granulocyte marker

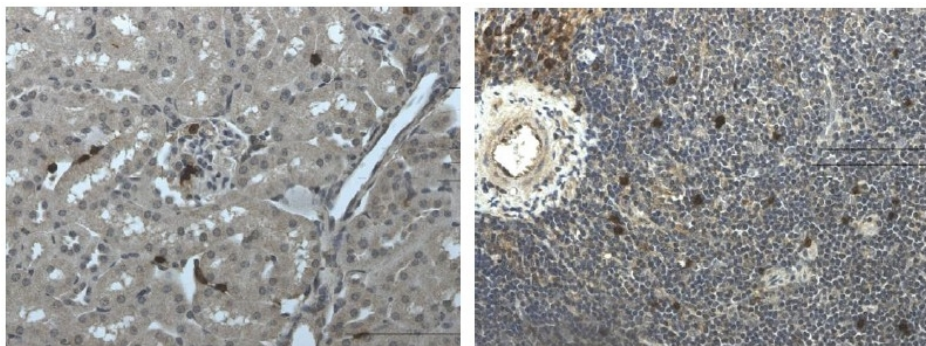
Product images:

Figure 1. Ly6G Immunohistochemistry staining paraffin sections of Mouse kidney and spleen tissues from LPS exposed animals.