

Product datasheet for **DM3516P**

Pdpn Hamster Monoclonal Antibody [Clone ID: RTD4E10]

Product data:

Product Type:	Primary Antibodies
Clone Name:	RTD4E10
Applications:	IHC, IP, WB
Recommended Dilution:	Immunohistochemistry on Frozen and Paraffin Sections: 1-10 µg/ml. Western blot: 1-10 µg/ml. The antibody will detect a 36-40 kDa band. Immunoprecipitation: 1-5 µg IgG per 1 ml lysate or reaction volume.
Reactivity:	Mouse
Host:	Hamster
Isotype:	IgG
Clonality:	Monoclonal
Immunogen:	Murine thymic stromal cell line
Specificity:	The monoclonal antibody will detect Podoplanin on the surface of lymphatic endothelial cells and some epithelial cell types by immunostaining or immunohistochemistry. The antibody does not cross-react with Human Podoplanin.
Formulation:	PBS, pH 7.4, without preservatives or stabilizers State: Purified State: Lyophilized purified IgG fraction from Cell Culture Supernatant
Reconstitution Method:	Restore with sterile water to a concentration of 0.1-1.0 mg/ml.
Purification:	Protein G Chromatography
Conjugation:	Unconjugated
Storage:	Prior to reconstitution store at 2-8°C. Following reconstitution store undiluted at 2-8°C for one month or (in aliquots) at -20°C for longer. Avoid repeated freezing and thawing.
Stability:	Shelf life: one year from despatch.
Gene Name:	podoplanin
Database Link:	Entrez Gene 14726 Mouse Q62011



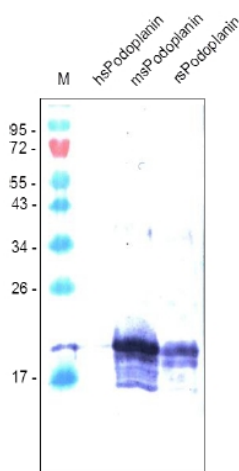
[View online »](#)

Background:

Podoplanin is a well-recognized lymphatic endothelium marker, which can be used to reliably distinguish lymphatic vessels from blood vessels. Podoplanin is a Mr 38,000 membrane mucoprotein that was originally detected on the surface of rat glomerular epithelial cells (podocytes) and was found to be linked to flattening of foot processes that occurs in glomerular diseases. Podoplanin shows features of a membrane mucoprotein with several conserved O-glycosylation sites. Currently, it is of unknown biological function. Because heavily O-glycosylated mucoproteins were identified recently as counterreceptors for selectins that mediate adhesion of inflammatory cells, it is possible that podoplanin plays a similar role in lymphatic endothelia.

Synonyms:

Glycoprotein 36, PA2.26 antigen, T1-alpha, Aggrus, PDPN, GP36, PSEC0003, PSEC0025

Product images:


Western blot analysis using Podoplanin Antibody with recombinant Human, Mouse and Rat soluble Podoplanin. There is no cross reaction with Human Podoplanin.