

## Product datasheet for **DM3502B**

### VEGF Receptor 2 (KDR) Mouse Monoclonal Antibody [Clone ID: KDREIC]

#### Product data:

Product Type:	Primary Antibodies
Clone Name:	KDREIC
Applications:	ELISA, FC, IHC, WB
Recommended Dilution:	<b>ELISA:</b> 1-10 µg/ml. <b>Western Blot:</b> 2-5 µg/ml. <b>Immunofluorescence/Immunohistochemistry:</b> 6-30 µg/ml. <b>Flow Cytometry and cell sorting:</b> 2-5 µg/ml.
Reactivity:	Human
Host:	Mouse
Isotype:	IgG1
Clonality:	Monoclonal
Immunogen:	Recombinant Human soluble extracellular KDR (D7) (110 kDa) (Cat.-No DA3530)
Specificity:	The monoclonal antibody will detect native Human VEGFR-2/KDR in ELISA experiments and on the surface of different Human cell types. Other species not tested.
Formulation:	PBS, pH 7.4 Label: Biotin State: Lyophilized purified IgG fraction Stabilizer: 50x BSA Preservative: 0.02% Sodium Azide
Reconstitution Method:	Restore in sterile water to a concentration of 0.1-1.0 mg/ml.
Purification:	Affinity Chromatography on Protein G
Conjugation:	Biotin
Storage:	Store lyophilized at 2-8°C for 6 months or at -20°C long term. After reconstitution store the antibody undiluted at 2-8°C for one month or (in aliquots) at -20°C long term. Avoid repeated freezing and thawing.
Stability:	Shelf life: one year from despatch.
Gene Name:	kinase insert domain receptor



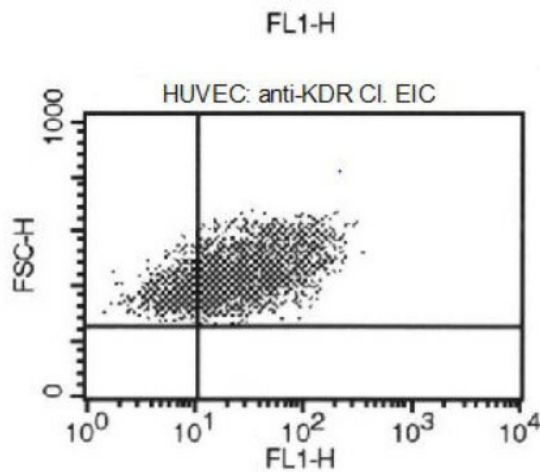
[View online »](#)

Database Link: [Entrez Gene 3791 Human P35968](#)

**Background:** VEGF receptor 2 is a member of a receptor tyrosine kinase family whose activation plays an essential role in a large number of biological processes such as embryonic development, wound healing, cell proliferation, migration and differentiation. Like other growth factor receptors, upon ligand binding VEGF receptor 2 dimerises and is autophosphorylated on multiple tyrosine residues. These sites can be involved in the regulation of kinase activity or serve as binding sites for SH2 and phosphotyrosine binding containing signalling proteins. Phosphorylation of Tyrosines 1054 and 1059 in the activation loop is required for activation of VEGF receptor 2 and its intrinsic tyrosine kinase activity. In case of HIV-1 infection, the interaction with extracellular viral Tat protein seems to enhance angiogenesis in Kaposi's sarcoma lesions.

**Synonyms:** VEGFR2, FLK1, KDR, VEGF Receptor 2

**Product images:**



FACS analysis of VEGFR-2/KDR expression in HUVE cells.