

Product datasheet for **DM349-05**

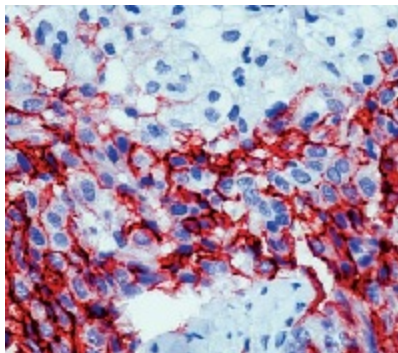
Mesothelioma Mouse Monoclonal Antibody [Clone ID: HBME-1]

Product data:

Product Type:	Primary Antibodies
Clone Name:	HBME-1
Applications:	IHC
Recommended Dilution:	Immunohistochemistry on paraffin embedded sections: diluted of 1:15-1:25 in an ABC method (60 minutes at room temperature) Recommended Positive Control: Mesothelioma
Reactivity:	Human
Host:	Mouse
Isotype:	IgM
Clonality:	Monoclonal
Immunogen:	BALB/C mice were injected with suspension of human mesothelioma cells from patients with malignant epithelial mesothelioma.
Specificity:	This antibody reacts with an unknown antigen on microvilli of mesothelioma cells. Cellular Localization: Cell membrane
Formulation:	10 mM citrate buffer, pH 6.0 - containing sodium azide as preservative State: Purified State: Liquid Ig fraction
Conjugation:	Unconjugated
Storage:	Store the antibody undiluted at 2-8°C for one month or (in aliquots) at -20°C for longer. Avoid repeated freezing and thawing.
Stability:	Shelf life: one year from despatch.
Background:	It stains normal mesothelial cells as well as epithelial mesotheliomas in a thick membrane pattern due to abundant lung microvilli on the surface of these cells.
Synonyms:	Mesothelioma marker



[View online »](#)

Product images:

Formalin fixed paraffin embedded human mesothelioma stained with Mesothelioma antibody, DM349