

Product datasheet for **DM337-05**

CDC25A Mouse Monoclonal Antibody [Clone ID: DCS-120+DCS-121]

Product data:

Product Type:	Primary Antibodies
Clone Name:	DCS-120+DCS-121
Applications:	IF, IHC, IP, WB
Recommended Dilution:	Immunofluorescence. Immunoprecipitation. Western Blot. Immunohistochemistry on Paraffin Embedded Sections: Use a dilution of 1/50-1/100 in an ABC method (30 minutes at room temperature, requires high temperature antigen unmasking with 10 mM citrate buffer, pH 6.0 prior to immunostaining) Recommended Positive Control: Tonsil.
Reactivity:	Human, Rat
Host:	Mouse
Isotype:	IgG2a
Clonality:	Monoclonal
Immunogen:	BALB/C mice were injected with purified recombinant CDC25A.
Specificity:	This antibody reacts with a 65 kD protein known as CDC25A. Cellular Localization: Nuclear membrane.
Formulation:	State: Purified State: Liquid purified Ig fraction with Sodium Azide as preservative.
Conjugation:	Unconjugated
Storage:	Store the antibody undiluted at 2-8°C for one month or (in aliquots) at -20°C for longer. Avoid repeated freezing and thawing.
Stability:	Shelf life: one year from despatch.
Gene Name:	cell division cycle 25A
Database Link:	Entrez Gene 993 Human P30304



[View online »](#)

Background:

The activity of cyclin-dependent kinases in cell cycle is regulated by the phosphorylation status, which is controlled by the antagonistic action of wee 1 kinase and CDC25 phosphatases. Three CDC25 genes are present in human cells: CDC25A, CDC25B and CDC25C. CDC25A and CDC25B are expressed throughout the cell cycle, with peak expression in G1 for CDC25A and in both G1-S phase and G2 for CDC25B. CDC25C is mainly expressed in G2 phase.

Synonyms:

CDC-25A

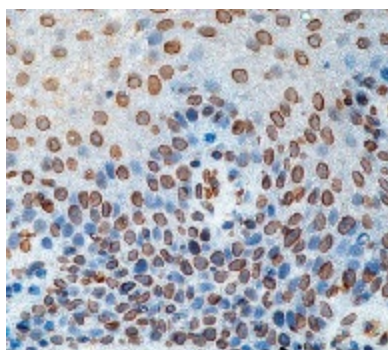
Product images:

Figure 1. Formalin fixed paraffin embedded human tonsil stained with CDC25A antibody. DM337