

## Product datasheet for **DM336-05**

### ERCC1 Mouse Monoclonal Antibody [Clone ID: 8F1]

#### Product data:

Product Type:	Primary Antibodies
Clone Name:	8F1
Applications:	IHC, IP, WB
Recommended Dilution:	<b>Immunoprecipitation.</b> <b>Immunohistochemistry on Paraffin Embedded Sections:</b> 1/100-1/200 in an ABC method. Formalin fixed paraffin embedded tissue sections require high temperature antigen unmasking with 10 mM citrate buffer, pH 6.0 prior to Immunostaining. <b>Incubation Time:</b> 30 minutes at RT. <b>Recommended Positive Control:</b> Tonsil. <b>Western Blot:</b> 1/100-1/500. use Human lung cell line as Positive Control.
Reactivity:	Human
Host:	Mouse
Isotype:	IgG2b
Clonality:	Monoclonal
Immunogen:	BALB/C mice were injected with full length recombinant human ERCC1 protein.
Specificity:	This antibody reacts with a 33-36 kDa protein known as ERCC1 polypeptide. <b>Cellular localization:</b> Nuclear.
Formulation:	State: Purified State: Liquid purified IgG fraction Preservative: < 0.1% Sodium Azide
Purification:	Protein A Chromatography
Conjugation:	Unconjugated
Storage:	Store the antibody undiluted at 2-8°C.
Stability:	Shelf life: one year from despatch.
Gene Name:	ERCC excision repair 1, endonuclease non-catalytic subunit
Database Link:	<a href="#">Entrez Gene 2067 Human P07992</a>



[View online »](#)

**Background:**

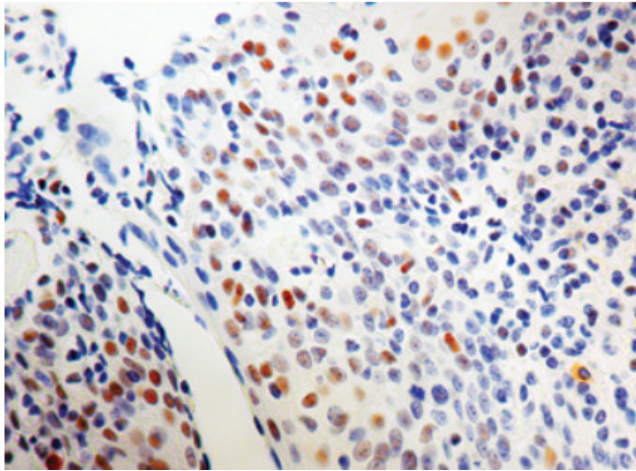
The mammalian ERCC1 (Excision Repair Cross Complementing) polypeptide is required for nucleotide excision repair (NER) of damaged DNA and is homologous to *Saccharomyces cerevisiae* RAD10, which functions in repair and mitotic intrachromosomal recombination. NER mechanism involves dual incisions on both sides of the damage catalyzed by two nucleases. In mammalian cells XPG cleaves 3' of the DNA lesion while the ERCC1-XPF complex makes the 5' incision. Elevated levels of ERCC1 have also been reported in Cisplatin-resistant cells.

**Synonyms:**

DNA excision repair protein ERCC-1, COFS4, UV20

**Note:**

**Molecular weight of antigen** :33-36 kDa

**Product images:**

Formalin fixed paraffin embedded human tonsil stained with ERCC1 antibody (DM336).