

## Product datasheet for **DM308-05**

### VEGFA Mouse Monoclonal Antibody [Clone ID: VG1]

#### Product data:

Product Type:	Primary Antibodies
Clone Name:	VG1
Applications:	IHC
Recommended Dilution:	Immunohistochemistry on Paraffin Embedded Sections: use a dilution of 1/20-1/40 with Polymer Detection systems such as our UnoVue or PolyVue systems. <i>Incubation Time:</i> 30 minutes at RT. High temperature treatment of formalin-fixed tissue sections using 1mM EDTA, pH 8.0 must be performed prior to the immunostaining. <i>Recommended Positive Control:</i> Astrocytoma
Reactivity:	Human
Host:	Mouse
Isotype:	IgG1
Clonality:	Monoclonal
Immunogen:	Recombinant VEGF protein
Specificity:	This antibody is specific to a cluster of proteins between 19-22 kD (reduced). Cellular Localization: Cytoplasmic, cell membrane, extracellular matrix.
Formulation:	State: Purified State: Liquid purified Ig fraction containing Sodium Azide as preservative
Purification:	Protein G Affinity Chromatography
Conjugation:	Unconjugated
Storage:	Store the antibody undiluted at 2-8°C for one month or (in aliquots) at -20°C for longer. Avoid repeated freezing and thawing.
Stability:	Shelf life: one year from despatch.
Gene Name:	vascular endothelial growth factor A
Database Link:	<a href="#">Entrez Gene 7422 Human P15692</a>

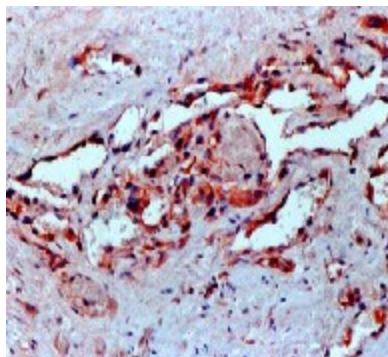


[View online »](#)

**Background:** VEGF is a homodimeric disulfide-linked glycoprotein involved in angiogenesis, which promotes tumor progression and metastasis. It exhibits potent mitogenic and permeability inducing properties specific for the vascular endothelium.

**Synonyms:** VEGFA, VEGF, VPF, Vascular endothelial growth factor A, Vascular permeability factor

**Product images:**



Formalin fixed paraffin embedded human angiosarcoma stained with VEGF antibody DM308 / DM308-05