

Product datasheet for **DM305-05**

Cytokeratin 15 (KRT15) (C-term) Mouse Monoclonal Antibody [Clone ID: LHK15]

Product data:

| | |
|-----------------------|---|
| Product Type: | Primary Antibodies |
| Clone Name: | LHK15 |
| Applications: | IF, IHC |
| Recommended Dilution: | Immunofluorescence. Immunohistochemistry on Paraffin Embedded Sections: 1/25-1/75 dilution in an ABC method (30 minutes at room temperature). Requires high temperature antigen unmasking with 10 mM citrate buffer, pH 6.0 prior to immunostaining. <i>Recommended Positive Control: Skin.</i> |
| Reactivity: | Bovine, Human, Mouse, Rat |
| Host: | Mouse |
| Isotype: | IgG2a |
| Clonality: | Monoclonal |
| Immunogen: | A 17-mer synthetic peptide from the C-terminus of human cytokeratin 15 |
| Specificity: | Cytokeratin 15 is a type I cytokeratin without a defined type II partner. Cellular Localization: Cytoplasmic. |
| Formulation: | State: Purified State: Liquid purified Ig fraction containing Sodium Azide as preservative. |
| Conjugation: | Unconjugated |
| Storage: | Store the antibody undiluted at 2-8°C for one month or (in aliquots) at -20°C for longer. Avoid repeated freezing and thawing. |
| Stability: | Shelf life: one year from despatch. |
| Gene Name: | keratin 15 |
| Database Link: | Entrez Gene 3866 Human P19012 |



[View online »](#)

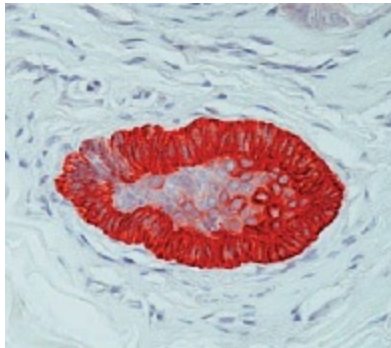
Background:

Cytokeratin 15 is expressed primarily in the basal keratinocytes of stratified tissues, including the fetal epidermis and fetal nail.

A number of human cytokeratins are expressed during the development of stratified epithelia from one-layered polar epithelia and continue to be expressed in several adult epithelial tissues. Cytokeratin 15 (CK15) is a type I keratin without a defined type II partner whose expression in epidermal diseases has not been investigated. A monoclonal antibody raised against the last 17 amino acids of the CK15 polypeptide show that CK-15 is expressed primarily in the basal keratinocytes of stratified tissues, including the fetal epidermis and fetal nail. Although CK-15 in normal hair follicles was virtually absent from hair bulbs, it was expressed by a subset of keratinocytes in the outer root sheath. In human conjunctival epithelium, strong expression of CK-15 was observed in basal cells, whereas CK19 was expressed in both basal and suprabasal layers. Although the expression of K15 and K19 differ in humans and mice, specific staining patterns can be used to characterize the epithelial phenotype in normal and diseased ocular surface.

Synonyms:

Cytokeratin-15, CK-15, K15, Keratin-15, Keratin 15, KRTB, KRT15

Product images:

Formalin fixed paraffin embedded human tonsil stained with Cytokeratin 15 antibody. DM305