

## Product datasheet for **DM278P**

### MYOD1 Mouse Monoclonal Antibody [Clone ID: 5.2F]

#### Product data:

Product Type:	Primary Antibodies
Clone Name:	5.2F
Applications:	ELISA, IF, IHC, IP, WB
Recommended Dilution:	<b>ELISA.</b> <b>Western Blot:</b> 1 µg/ml. <b>Immunofluorescence.</b> <b>Electron microscopy.</b> <b>Immunoprecipitation:</b> 2 µg/mg of protein lysate. <b>Immunohistochemistry on Frozen and Paraffin Sections:</b> 2-4 µg/ml.
Reactivity:	Chicken, Human, Mouse, Rat
Host:	Mouse
Isotype:	IgG2a
Clonality:	Monoclonal
Immunogen:	Hybridoma produced by the fusion of splenocytes from BALB/c mice immunized with recombinant mouse MyoD1 protein and mouse myeloma Sp2/0-Ag14 cells.
Specificity:	This antibody detects MyoD1.
Formulation:	Phosphate buffered saline with 0.08% Sodium Azide as preservative State: Purified State: Liquid purified Ig fraction
Concentration:	lot specific
Purification:	Protein A/G Chromatography
Conjugation:	Unconjugated
Storage:	Store the antibody undiluted at 2-8°C for one month or (in aliquots) at -20°C for longer. Avoid repeated freezing and thawing.
Stability:	Shelf life: One year from despatch.
Gene Name:	myogenic differentiation 1
Database Link:	<a href="#">Entrez Gene 17927 Mouse P10085</a>



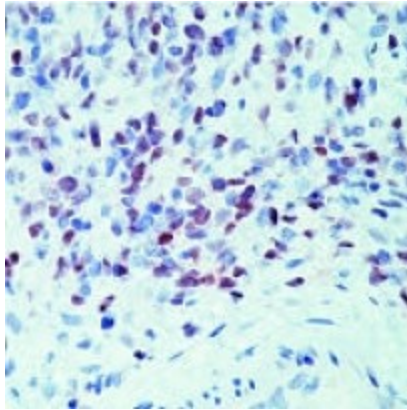
[View online »](#)

**Background:**

Recognizes a phosphoprotein of 45kDa, identified as MyoD1. The epitope of this antibody maps in between amino acid 3-56 in the N-terminus of mouse MyoD1 protein. It does not cross react with myogenin, Myf5, or Myf6. Antibody to MyoD1 labels the nuclei of myoblasts in developing muscle tissues. MyoD1 is not detected in normal adult tissue, but is highly expressed in the tumor cell nuclei of rhabdomyosarcomas. Occasionally nuclear expression of MyoD1 is seen in ectomesenchymoma and a subset of Wilm's tumors. Weak cytoplasmic staining is observed in several non-muscle tissues, including glandular epithelium and also in rhabdomyosarcomas, neuroblastomas, Ewing's sarcomas and alveolar soft part sarcomas.

**Synonyms:**

MYF3, MYOD, Myoblast determination protein 1, Myogenic factor 3, BHLHC1

**Product images:**

Immunohistochemical staining using MyoD1 antibody on formalin fixed, paraffin embedded human rhabdomyosarcoma.