

Product datasheet for **DM274PX**

Cytokeratin 19 (KRT19) Mouse Monoclonal Antibody [Clone ID: Ks19.1 (A53-B/A2)]

Product data:

Product Type:	Primary Antibodies
Clone Name:	Ks19.1 (A53-B/A2)
Applications:	ELISA, FC, IF, IHC, IP, WB
Recommended Dilution:	ELISA. Western blot. Flow Cytometry. Immunofluorescence. Immunohistochemistry on Paraffin Sections: 1/100-1/200. Requires protein digestion pre-treatment of paraffin sections e.g. trypsin or pronase. Recommended Positive Control: Appendix.
Reactivity:	Human
Host:	Mouse
Isotype:	IgG2a
Clonality:	Monoclonal
Immunogen:	Human breast cancer cell line MCF-7
Specificity:	Specific for the rod domain (aa 312-335) of Human Cytokeratin 19. In Western blotting 40 kDa and 19 kDa bands are observed. Clone A53-B/A2 detects a band of ~45 kDa in Western blotting using an A-549 Human alveolar adenocarcinoma cell line lysate.
Formulation:	PBS State: Purified State: Liquid purified IgG fraction from Tissue Culture Supernatant Preservative: 0.09% Sodium Azide
Concentration:	lot specific
Purification:	Affinity Chromatography on Protein G
Conjugation:	Unconjugated
Storage:	Store undiluted at 2-8°C for one month or (in aliquots) at -20°C for longer. Avoid repeated freezing and thawing.
Stability:	Shelf life: one year from despatch.



[View online »](#)

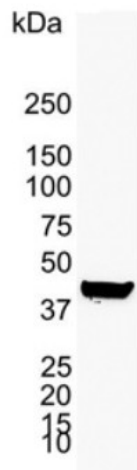
Gene Name: keratin 19

Database Link: [Entrez Gene 3880 Human P08727](#)

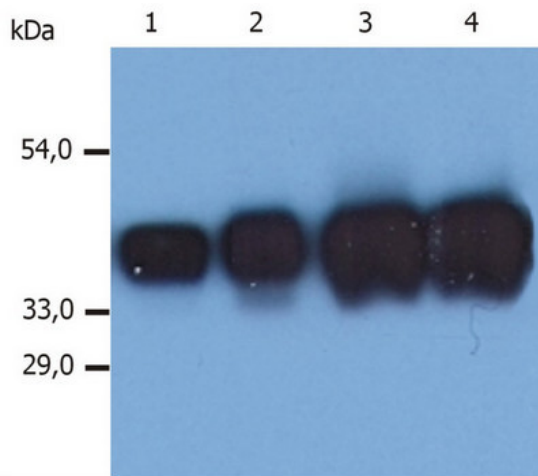
Background: This protein is a member of the keratin family. The keratins are intermediate filament proteins responsible for the structural integrity of epithelial cells and are subdivided into cytokeratins and hair keratins. The type I cytokeratins consist of acidic proteins which are arranged in pairs of heterotypic keratin chains. Unlike its related family members, this smallest known acidic cytokeratin is not paired with a basic cytokeratin in epithelial cells. It is specifically expressed in the periderm, the transiently superficial layer that envelops the developing epidermis. Keratin 19 is not expressed in hepatocytes, therefore, antibody to keratin 19 is useful in the identification of liver metastasis. The degree of keratin 19 positivity in breast cancer distinguishes malignant from benign tumours. Keratin 19 is often co-expressed with keratin 7.

Synonyms: Cytokeratin-19, Keratin-19, KRT19, CK19, K19

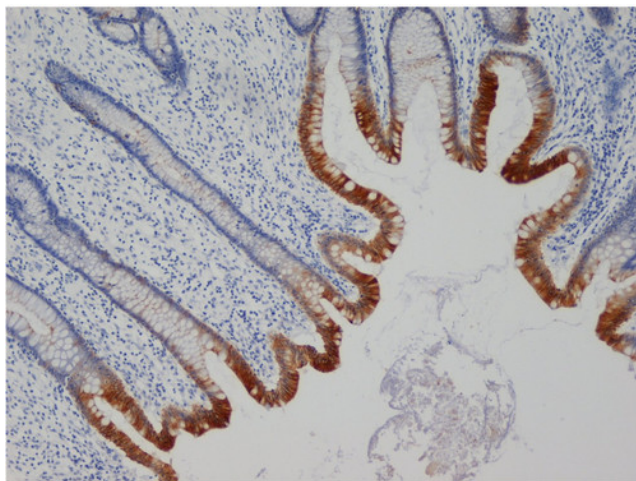
Product images:



Western blot analysis of A549 Human alveolar adenocarcinoma whole cell lysate probed with Mouse anti-Human Cytokeratin 19 Antibody followed by HRP conjugated Goat anti Mouse IgG, visualized by chemiluminescence.



Western Blotting analysis (reducing conditions) of whole cell lysate of MCF-7 Human breast adenocarcinoma cell line. Lane 1, 2: immunostaining with anti-Human Cytokeratin 19 (BA-17 [SM1822PS]). Lane 3, 4: immunostaining with anti-Human Cytokeratin 19 (Clone A53-B/A2).



Staining of Paraffin Embedded Human appendix with Mouse anti-Human Cytokeratin 19 Antibody.