

## Product datasheet for **DM266-05**

### Cyclin E1 (CCNE1) Mouse Monoclonal Antibody [Clone ID: HE12]

#### Product data:

Product Type:	Primary Antibodies
Clone Name:	HE12
Applications:	IHC
Recommended Dilution:	Immunohistochemistry on Paraffin Embedded Sections: Use a dilution of 1/25-1/50 in an ABC method (30 minutes at room temperature). Formalin fixed paraffin embedded tissue sections require high temperature antigen unmasking with 10 mM citrate buffer, pH 6.0 prior to immunostaining. Recommended Positive Control: Breast carcinoma.
Reactivity:	Human
Host:	Mouse
Isotype:	IgG1
Clonality:	Monoclonal
Immunogen:	Synthetic peptide corresponding to human cyclin E protein.
Specificity:	This antibody recognizes a doublet of 50 kD and a single band of 42 kD identified as Cyclin E. Cellular Localization: Nuclear
Formulation:	State: Supernatant State: Liquid purified Ig fraction containing Sodium Azide as preservative.
Conjugation:	Unconjugated
Storage:	Store the antibody undiluted at 2-8°C for one month or (in aliquots) at -20°C for longer. Avoid repeated freezing and thawing.
Stability:	Shelf life: one year from despatch.
Gene Name:	cyclin E1
Database Link:	<a href="#">Entrez Gene 898 Human P24864</a>



[View online »](#)

**Background:**

Cyclin proteins are a family of related proteins, which control the progression of the eukaryotic cell cycle. Overexpression of cyclin E shortens the length of the G1 phase, accelerating progression of S phase. The activity of cyclin E is mediated through its activation of cyclin dependent kinase 2 (cdk2) protein and is modulated by the presence of tumor suppressor proteins such as p16.

During tumor cell and normal cell proliferation, cyclins activate the cyclin-dependent protein kinases, which in turn controls progression through the G1 phase of the cell cycle.

**Synonyms:**

Cyclin-E1, CCNE1, CCNE

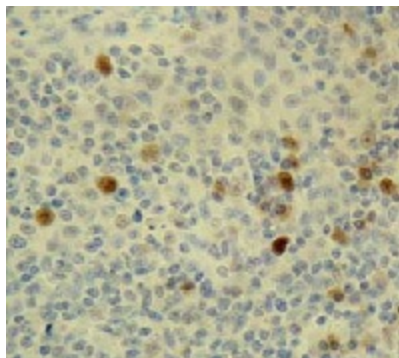
**Product images:**

Figure 1. Formalin fixed paraffin embedded human breast carcinoma stained with Cyclin E antibody (DM266-05).