

## Product datasheet for **DM207**

### Myosin-1 / MYH1 Mouse Monoclonal Antibody [Clone ID: MY-32]

#### Product data:

Product Type:	Primary Antibodies
Clone Name:	MY-32
Applications:	IHC
Recommended Dilution:	<b>Immunohistochemistry on Paraffin Embedded Sections:</b> Use at 1/25-1/50 in an ABC method (30 minutes at room temperature). <b>Recommended Positive Control:</b> Skeletal muscle.
Reactivity:	Bovine, Chicken, Guinea Pig, Human, Mouse, Rabbit, Rat
Host:	Mouse
Isotype:	IgG1
Clonality:	Monoclonal
Immunogen:	Rabbit Muscle Myosin.
Specificity:	This antibody recognizes heavy chain of Human skeletal Myosin. It does not stain cardiac or smooth muscle Myosin. This antibody stains the fast twitch (type II) isomyosin molecule. <b>Cellular Localization:</b> Cytoplasmic.
Formulation:	State: Ascites State: Liquid diluted Ascites Preservative: Sodium Azide
Conjugation:	Unconjugated
Storage:	Store undiluted at 2-8°C.
Stability:	Shelf life: one year from despatch.
Database Link:	<a href="#">P02562</a>



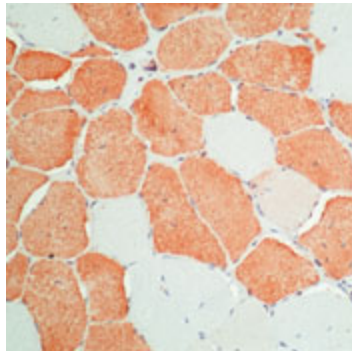
[View online »](#)

**Background:**

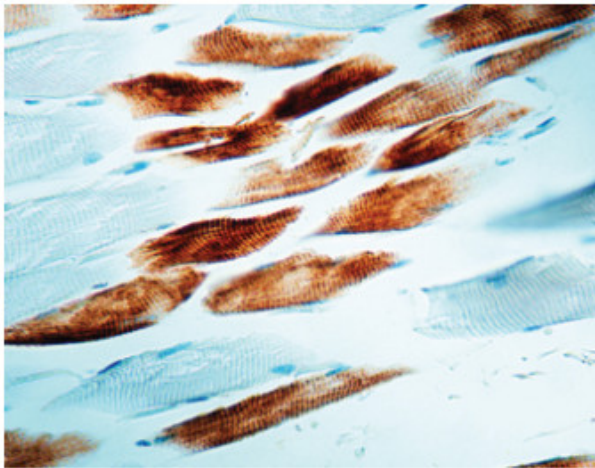
Myosin is a 480kDa protein known to interact with actin in muscle and in non-muscle cells. It contains two identical heavy chains (200kDa each) and four light chains (15-26kDa). Myosin molecules consist of two major regions: tails (rod) and heads; they aggregate into filaments through the tail region and interact with actin and with ATP through the head region. Multiple forms of myosin heavy chains exist for each muscle type-skeletal, cardiac, smooth and non-muscle isomyosin forms exist in different types of skeletal muscle, depending on the physiological function of the muscle. These are designated as type I (slow-twitch) and type II (fast-twitch).

**Synonyms:**

Myosin heavy chain 1, Myosin heavy chain skeletal muscle

**Product images:**

Formalin-Fixed, Paraffin-Embedded Human skeletal muscle stained with Myosin, skeletal muscle Antibody Cat.-No DM207 using peroxidase-conjugate and AEC chromogen. Note cytoplasmic staining of muscle cells.



Formalin-Fixed, Paraffin-Embedded Human skeletal muscle stained with Myosin, skeletal muscle Antibody Cat.-No DM207 (Clone MY32).